



INVOICE

BILL TO:

NOLAN TRANSPORTATION GROUP LLC
400 NORTHRIDGE RD STE 1000
ATLANTA, GA 30350

INVOICE DATE: 06/10/2025**INVOICE #:** R94978**TERMS:** NET 30**DUE DATE:** 07/10/2025

DATE	CUSTOMER REF#	ORIGIN - DESTINATION	QUANTITY	RATE	AMOUNT
06/09/2025		40 Roland St, Charlestown, MA 02129-1222, USA - 7410 Merritt Drive, Suite 150, Manassas, VA 20109, USA			
		Freight Income	1	\$800.00	\$800.00
		Extra-stop	1	\$200.00	\$200.00

TOTAL

\$1,000.00

PLEASE NOTE

The right to payment under this invoice has been assigned to Compass payment Solutions LLC (CFS) and all payments hereunder are to be directed to the assignee at the address noted below.

Remittances to other than CFS do not constitute payment of this invoice. CFS must be given notification of any claims, agreements or merchandise returns which would affect the payment of all or part of this Invoice on the due date.

COMPASS FUNDING SOLUTIONS LLC

P.O.BOX 205154

DALLAS, TX 75320-5154

Tel: 844-899-8092

Nolan Transportation Group Rate Confirmation: **Load # 8582374**

Carrier Sales Rep: GRADY EDWARDS
P: (854) 800-6029
E: GRADY.EDWARDS@NTGFREIGHT.COM

After Hours Contact
P: (470) 964-2024

General Information	Equipment: 53FT Dry Van	Commodity: Printed Material & Packaging	Total Weight (lbs): 44800
# Of Stops: 2	# Of PALLETS: 24	Packaging Type: PALLETS	Reference #'s: PO #: 25060
BL#:	CTR#:	MBOL#:	Load Requirements:

Origin Stop 1:

BOSTON PAPER BOARD CORP
40 Roland St,
Charlestown,MA 02129-1222,USA
Business Hours: 08:00 - 15:00

*All details are exclusive to stop 1

Ship Date: 06/09/25

Weight (lbs): 0

Appt #:

Instructions: Shipper has covered dock. Trucks can pull into the parking lot, turn around and back in.

Apt. Time: FCFS (see business hours)

Pickup #:

Stop Requirements:

Quantity: 0

Destination Stop 2:

United Brokerage
7410 Merritt Drive,Suite 150,
Manassas,VA 20109,USA

*All details are exclusive to stop 2

Delivery Date: 06/10/25

Delivery #:

Appt #:

Instructions: PO # 25059

Apt. Time: 09:00

Quantity: 0

Weight (lbs): 0

Stop Requirements:

Carrier Info

ZIGI FREIGHT DBA ROYAL3 (MC# 944686, DOT# 2828543)

Dispatcher: ASTA MIJAC

Phone: (630) 485-7370

Email: ASTA@ROYAL3INC.COM

Driver Name: WILDOR

Driver Phone: +1 (321) 336-6245

Truck: 755

Trailer: 94938

Rate Details

\$800.00 Line Haul

\$800.00 Total

CARRIER TERMS AND CONDITIONS CONTINUED: //FAX BACK THIS CONFIRMATION SIGNED & COMPLETED TO FAX # LOCATED ON BOTTOM RIGHT OF THIS CONFIRMATION.FOR DISPATCH, DRIVER MUST CALL NTG TO ACTIVATE PICK UP# //SHOULD A PROBLEM OR CHANGE ARISE AT ANY TIME, NOTIFY NTG IMMEDIATELY, 24 / 7.RATE IS FOR EXCLUSIVE TRUCK ONLY UNLESS STATED IN WRITING.ALL FREIGHT TRAILERS MUST BE 10 YEARS OR NEWER.DO NOT SIGN FOR DAMAGED GOODS. NTG IS NOT RESPONSIBLE FOR OVERWEIGHT/ GROSS TRAILERS AFTER DRIVER HAS LEFT THE SHIPPER.IT IS CARRIER'S RESPONSIBILITY TO CONFIRM OR MAKE ANY NECESSARY APPOINTMENTS 24 HOURS IN ADVANCE, AND CONFIRM DELIVERY ADDRESS ON BILLS. IF DIFFERENT,CALL BOOKING OFFICE IMMEDIATELY FOR APPROVAL.ANY APPROVED CHANGES OR CHARGES MUST BE NOTED ON A NEW RATE CONFIRMATION SUPPLIED BY NTG.ALL LUMPERS AND / OR ACCESSORIAL FEES MUST BE PREAPPROVED BY NTG THROUGH A NEW RATE CONFIRMATION AND AN ORIGINAL RECEIPT SENT IN WITH CARRIER'S INVOICE IN ORDER TO BE REIMBURSED.DRIVER ASSIST AND FUEL SURCHARGE IS INCLUDED IN RATE.CARRIER REPRESENTS THERE ARE NO EXCLUSIONS IN THEIR INSURANCE POLICY THAT WOULD APPLY TO THE FREIGHT BEING TRANSPORTED. NTG DOES NOT ADVANCE FUNDS FOR ANY REASON.CARRIER SHALL COMPLY WITH ALL APPLICABLE FEDERAL, STATE, AND LOCAL LAWS AND REGULATIONS, AS WELL AS ALL ELD COMPLIANCE REGULATIONS,CONCERNING THE TRANSACTIONS CONTEMPLATED BY THIS AGREEMENT.THIS CONFIRMATION MUST BE SIGNED BY CARRIER AND RECEIVED BACK BY OURBOOKING OFFICE FOR PAYMENT.

ALL ACCESSORIALS MUST BE REQUESTED, WITH ALL RECEIPTS UPLOADED WITHIN 48 HOURS OF DELIVERY

Double Brokering this load will cause this contract to become Null &Void. Double Brokering is strictly prohibited!

Signature_____ Position_____ Date_____

Carrier Signature_____ Position_____ Date_____

Driver Name_____ Driver Cell_____

Tractor #_____ Trailer#_____

By doing business with NTG you fully agree with the terms and conditions listed herein and the terms and conditions listed in the
NTG Broker-Carrier Agreement.

NTG LOAD # 8582374 must be included on your invoice with a copy of the POD or the invoice will not be paid

SEND ALL INVOICES and PODS TO: 244 Perimeter Center Pkwy NE Fourth Floor, Atlanta, GA 30346 POD@NTGFREIGHT.COM, or Fax to 678-569-1059. **WANT TO GET PAID FASTER?** NTG's exclusive carrier payment program offers permanent Net-1 & Net-2 day terms for a nominal fee. Learn more by contacting your carrier Carrier Sales Representative or visiting <http://www.NTGFreight.com/Carriers> . Broker agreement & rate confirmation must be completed, signed, and on file for payment on this load. \$200.00 will be deducted from the rate is the POD not received within 48 hours of scheduled delivery, or if this rate confirmation is used as a POD.

244 Perimeter Center Pkwy NE Fourth Floor, Atlanta, GA 30346

Find Loads, Book Loads, Get Paid Fast.

beon Carrier

Beon Carrier gives you visibility and control of your business. Take advantage of enhanced load board features, rate visibility, bid and book options, real-time 1 Day and 2 Day payments and document management - all in one place!

Find Loads Hassle-free

Leverage lane preferences in Beon Carrier to receive optimized load options. With expanded equipment availabilities, carriers have access to a wide range of load preference selections.

Submit Bids & Book Loads

With Beon Carrier, you can view all relevant load details, such as loading hours, appointment times and weight information. Then, submit a bid on the load you want and book it with a single click.

Easy Tender Acceptance

Beon Carrier makes it simple to manage your available tenders. Easily accept or decline freight tenders with the click of a button. For shipments specifically matched for you, simply accept, decline or submit a counteroffer from the tender section within Beon Carrier.

Get Paid Fast

Get paid faster with Beon Carrier – use our 1 Day and 2 Day Payment options that deposit cash directly into your checking account. Access load payment status and receive 24/7 support for any payment inquiries.

Manage Documents with Ease

Easily manage loads within Beon Carrier by uploading a picture of shipment documents. With this feature, your shipments and accessorials will be processed quickly.



LOG IN TODAY

Don't have an account? [Register](#) to get started!



Scan the QR Code to
Download the Beon
Carrier mobile app or
[Click Here](#)

Nolan Transportation Group Rate Confirmation: **Load # 8582374**

Carrier Sales Rep: GRADY EDWARDS	After Hours Contact
P: (854) 800-6029	P: (470) 964-2024
E: GRADY.EDWARDS@NTGFREIGHT.COM	

General Information	Equipment: 53FT Dry Van	Commodity: Printed Material & Packaging	Total Weight (lbs): 44800
# Of Stops: 2	# Of PALLETS: 24	Packaging Type: PALLETS	Reference #s: PO #: 25060
BL#:	CTR#:	MBOL#:	Load Requirements:

Origin Stop 1: BOSTON PAPER BOARD CORP 40 Roland St, Charlestown,MA 02129-1222,USA Business Hours: 08:00 - 15:00 *All details are exclusive to stop 1	Ship Date: 06/09/25 Weight (lbs): 0 Appt #: Instructions: Shipper has covered dock. Trucks can pull into the parking lot, turn around and back in.	Apt. Time: FCFS (see business hours) Pickup #: Stop Requirements:	Quantity: 0
Destination Stop 2: United Brokerage 7410 Merritt Drive,Suite 150, Manassas,VA 20109,USA *All details are exclusive to stop 2	Delivery Date: 06/10/25 Delivery #: Appt #: Instructions: PO # 25059	Apt. Time: 09:00 Stop Requirements:	Quantity: 0 Weight (lbs): 0

Carrier Info ZIGI FREIGHT DBA ROYAL3 (MC# 944686, DOT# 2828543) Dispatcher: ASTA MIJAC Email: ASTA@ROYAL3INC.COM Driver Name: WILDOR Truck: 755	Phone: (630) 485-7370 Driver Phone: +1 (321) 336-6245 Trailer: 94938	Rate Details \$800.00 Line Haul \$200.00 Stop-Off Fee \$1000.00 Total
--	---	---

CARRIER TERMS AND CONDITIONS CONTINUED: //FAX BACK THIS CONFIRMATION SIGNED & COMPLETED TO FAX # LOCATED ON BOTTOM RIGHT OF THIS CONFIRMATION.FOR DISPATCH, DRIVER MUST CALL NTG TO ACTIVATE PICK UP# //SHOULD A PROBLEM OR CHANGE ARISE AT ANY TIME, NOTIFY NTG IMMEDIATELY, 24 / 7.RATE IS FOR EXCLUSIVE TRUCK ONLY UNLESS STATED IN WRITING.ALL FREIGHT TRAILERS MUST BE 10 YEARS OR NEWER.DO NOT SIGN FOR DAMAGED GOODS. NTG IS NOT RESPONSIBLE FOR OVERWEIGHT/ GROSS TRAILERS AFTER DRIVER HAS LEFT THE SHIPPER.IT IS CARRIER'S RESPONSIBILITY TO CONFIRM OR MAKE ANY NECESSARY APPOINTMENTS 24 HOURS IN ADVANCE, AND CONFIRM DELIVERY ADDRESS ON BILLS. IF DIFFERENT,CALL BOOKING OFFICE IMMEDIATELY FOR APPROVAL.ANY APPROVED CHANGES OR CHARGES MUST BE NOTED ON A NEW RATE CONFIRMATION SUPPLIED BY NTG.ALL LUMPERS AND / OR ACCESSORIAL FEES MUST BE PREAPPROVED BY NTG THROUGH A NEW RATE CONFIRMATION AND AN ORIGINAL RECEIPT SENT IN WITH CARRIER'S INVOICE IN ORDER TO BE REIMBURSED.DRIVER ASSIST AND FUEL SURCHARGE IS INCLUDED IN RATE.CARRIER REPRESENTS THERE ARE NO EXCLUSIONS IN THEIR INSURANCE POLICY THAT WOULD APPLY TO THE FREIGHT BEING TRANSPORTED. NTG DOES NOT ADVANCE FUNDS FOR ANY REASON.CARRIER SHALL COMPLY WITH ALL APPLICABLE FEDERAL, STATE, AND LOCAL LAWS AND REGULATIONS, AS WELL AS ALL ELD COMPLIANCE REGULATIONS,CONCERNING THE TRANSACTIONS CONTEMPLATED BY THIS AGREEMENT.THIS CONFIRMATION MUST BE SIGNED BY CARRIER AND RECEIVED BACK BY OURBOOKING OFFICE FOR PAYMENT.

ALL ACCESSORIALS MUST BE REQUESTED, WITH ALL RECEIPTS UPLOADED WITHIN 48 HOURS OF DELIVERY

Double Brokering this load will cause this contract to become Null &Void. Double Brokering is strictly prohibited!

Signature_____ Position_____ Date_____

Carrier Signature_____ Position_____ Date_____

Driver Name_____ Driver Cell_____

Tractor #_____ Trailer#_____

By doing business with NTG you fully agree with the terms and conditions listed herein and the terms and conditions listed in the NTG Broker-Carrier Agreement.

NTG LOAD # 8582374 must be included on your invoice with a copy of the POD or the invoice will not be paid

SEND ALL INVOICES and PODS TO: 244 Perimeter Center Pkwy NE Fourth Floor, Atlanta, GA 30346 POD@NTGFREIGHT.COM, or Fax to 678-569-1059. **WANT TO GET PAID FASTER?** NTG's exclusive carrier payment program offers permanent Net-1 & Net-2 day terms for a nominal fee. Learn more by contacting your carrier Carrier Sales Representative or visiting <http://www.NTGFreight.com/Carriers> . Broker agreement & rate confirmation must be completed, signed, and on file for payment on this load. \$200.00 will be deducted from the rate is the POD not received within 48 hours of scheduled delivery, or if this rate confirmation is used as a POD.

244 Perimeter Center Pkwy NE Fourth Floor, Atlanta, GA 30346

Find Loads, Book Loads, Get Paid Fast.

beon Carrier

Beon Carrier gives you visibility and control of your business. Take advantage of enhanced load board features, rate visibility, bid and book options, real-time 1 Day and 2 Day payments and document management - all in one place!

Find Loads Hassle-free

Leverage lane preferences in Beon Carrier to receive optimized load options. With expanded equipment availabilities, carriers have access to a wide range of load preference selections.

Submit Bids & Book Loads

With Beon Carrier, you can view all relevant load details, such as loading hours, appointment times and weight information. Then, submit a bid on the load you want and book it with a single click.

Easy Tender Acceptance

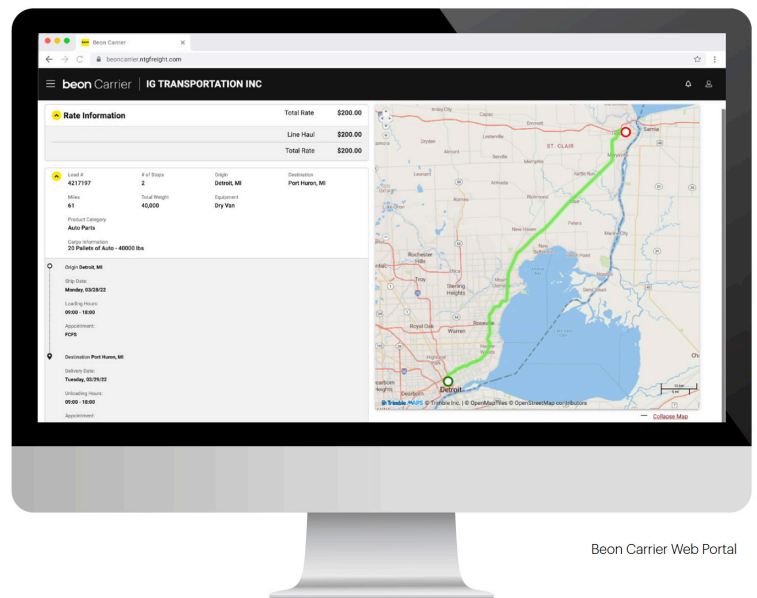
Beon Carrier makes it simple to manage your available tenders. Easily accept or decline freight tenders with the click of a button. For shipments specifically matched for you, simply accept, decline or submit a counteroffer from the tender section within Beon Carrier.

Get Paid Fast

Get paid faster with Beon Carrier – use our 1 Day and 2 Day Payment options that deposit cash directly into your checking account. Access load payment status and receive 24/7 support for any payment inquiries.

Manage Documents with Ease

Easily manage loads within Beon Carrier by uploading a picture of shipment documents. With this feature, your shipments and accessorials will be processed quickly.



LOG IN TODAY

Don't have an account? [Register](#) to get started!



Scan the QR Code to
Download the Beon
Carrier mobile app or
[Click Here](#)

BOSTON PAPER BOARD

Bill of Lading

P.O. Box 290086
Boston, MA 02129

No.: 25060

FROM

TO

Name **Boston Paper Board Corp**
40 Roland Street
Boston, MA 02129

Name **UNITED BROKERAGE OF MAN**
Company **7410 MERRITT PARK DR**
Street **SUITE 150**
City, State **MANASSAS, VA**
Zip Code **20109**

Date

Dept

Acct

Zip Code

20109

Number of Packages	Kind of Package, Description of Articles, Special Marks, and Exceptions	Weight (Subject to Change)	Serial Numbers
1760 bdl's	PRINTING PAPER NOT PRINTED		
24 pall	PO# 364072	44,840#	
	20 pall/80 1600 bdl's 30X36 White News 25# bdl's		
	4 pall/40 160 bdl's 30X36 White News 25# Bdl's		

Shipping Instructions

For Shipping Use Only

Check One

☐ Next Day
☐ Second Day
☐ Routine

Payment

☒ X
☐
☐
☐

Shipper
Recipient
Third Party
COD Amt Due

Method

Bill No.

Ship. Cost

Date

Shipped By

Dept. Chgd

Delivered by

DATE

6/9/25

Received by

Bret Andersen 6/10/25
VBP

X

Jose Rivera

COMMENTS

NOTE TO TRUCKER & RECEIVER: We will NOT be responsible for any shortages or damages after the b/l is signed.

CALL 571-343-5031
CHRIS OR BRETT