



INVOICE

BILL TO:

NOLAN TRANSPORTATION GROUP LLC
400 NORTHRIDGE RD STE 1000
ATLANTA, GA 30350

INVOICE DATE: 03/24/2025**INVOICE #:** R82759**TERMS:** NET 30**DUE DATE:** 04/24/2025

DATE	CUSTOMER REF#	ORIGIN - DESTINATION	QUANTITY	RATE	AMOUNT
03/22/2025		48 Quarry Rd, Douglassville, PA 19518, USA - 7253 NC-48, Battleboro, NC 27809-9183, USA			
		Freight Income	1	\$900.00	\$900.00
		Lumper	1	\$320.00	\$320.00

TOTAL

\$1,220.00

PLEASE NOTE

The right to payment under this invoice has been assigned to Compass payment Solutions LLC (CFS) and all payments hereunder are to be directed to the assignee at the address noted below.

Remittances to other than CFS do not constitute payment of this invoice. CFS must be given notification of any claims, agreements or merchandise returns which would affect the payment of all or part of this Invoice on the due date.

COMPASS FUNDING SOLUTIONS LLC**P.O.BOX 205154****DALLAS, TX 75320-5154****Tel: 844-899-8092**

Nolan Transportation Group Rate Confirmation: **Load # 8396617**

Carrier Sales Rep: GRADY EDWARDS
P: (854) 800-6029
E: GRADY.EDWARDS@NTGFREIGHT.COM

After Hours Contact
P: (470) 964-2024

General Information	Equipment: 53FT Van / Reefer	Commodity: Dry Food	Total Weight (lbs): 28800
# Of Stops: 2	# Of PALLETS: 18	Packaging Type: PALLETS	Reference #s: PO #: 46793366L
BL#:	CTR#:	MBOL#:	Load Requirements:

Origin Stop 1:

GOODWEST
48 Quarry Road,
Douglassville, PA 19518, USA

Business Hours: 08:00 - 12:00

***All details are exclusive to stop 1**

Ship Date: 03/22/25

Weight (lbs): 28800

Appt #:

Instructions: DRIVER RESPONSIBLE FOR CONFIRMING LOADED PC COUNT AND WEIGHT BEFORE LEAVING SHIPPER. FULL TRUCKLOAD, FTL - REQUIREMENTS:-If you will be late contact shipper to get new appointment time. Trailer must be Clean, Dry & Odor Free. Driver is responsible for securing load with not less than two straps and or two load locks, provided by driver. Per the signed accessorial agreement:-Penalty for Missed Pick Up: \$150. Penalty for Late Delivery: \$400.

Apt. Time: FCFS (see business hours)

Pickup #: 10047425

Stop Requirements:

Quantity: 18

Destination Stop 2:

MCLANE CAROLINA
7253 NC-48,
Battleboro, NC 27809-9183, USA

***All details are exclusive to stop 2**

Delivery Date: 03/24/25

Delivery #:

Appt #:

Instructions: \$400 MISSED/LATE APPT FEE. Must have POD within 15 minutes of delivery sent to erin.moriarty@ntgfreight.com APPT 3/24 10 AM

Apt. Time: 10:00

Quantity: 18

Weight (lbs): 28800

Stop Requirements:

Carrier Info

ZIGI FREIGHT INC (MC# 944686, DOT# 2828543)

Dispatcher: kelly@royal3inc.com

Phone: (630) 485-7370

Email: kelly@royal3inc.com

Driver Name: will assign

Driver Phone: +1 (630) 485-7370

Truck: 111

Trailer: 222

Rate Details

\$900.00 Line Haul

\$900.00 Total

CARRIER TERMS AND CONDITIONS CONTINUED: //FAX BACK THIS CONFIRMATION SIGNED & COMPLETED TO FAX # LOCATED ON BOTTOM RIGHT OF THIS CONFIRMATION.FOR DISPATCH, DRIVER MUST CALL NTG TO ACTIVATE PICK UP# //SHOULD A PROBLEM OR CHANGE ARISE AT ANY TIME, NOTIFY NTG IMMEDIATELY, 24 / 7.RATE IS FOR EXCLUSIVE TRUCK ONLY UNLESS STATED IN WRITING.ALL FREIGHT TRAILERS MUST BE 10 YEARS OR NEWER.DO NOT SIGN FOR DAMAGED GOODS. NTG IS NOT RESPONSIBLE FOR OVERWEIGHT/ GROSS TRAILERS AFTER DRIVER HAS LEFT THE SHIPPER.IT IS CARRIER'S RESPONSIBILITY TO CONFIRM OR MAKE ANY NECESSARY APPOINTMENTS 24 HOURS IN ADVANCE, AND CONFIRM DELIVERY ADDRESS ON BILLS. IF DIFFERENT,CALL BOOKING OFFICE IMMEDIATELY FOR APPROVAL.ANY APPROVED CHANGES OR CHARGES MUST BE NOTED ON A NEW RATE CONFIRMATION SUPPLIED BY NTG.ALL LUMPERS AND / OR ACCESSORIAL FEES MUST BE PREAPPROVED BY NTG THROUGH A NEW RATE CONFIRMATION AND AN ORIGINAL RECEIPT SENT IN WITH CARRIER'S INVOICE IN ORDER TO BE REIMBURSED.DRIVER ASSIST AND FUEL SURCHARGE IS INCLUDED IN RATE.CARRIER REPRESENTS THERE ARE NO EXCLUSIONS IN THEIR INSURANCE POLICY THAT WOULD APPLY TO THE FREIGHT BEING TRANSPORTED. NTG DOES NOT ADVANCE FUNDS FOR ANY REASON.CARRIER SHALL COMPLY WITH ALL APPLICABLE FEDERAL, STATE, AND LOCAL LAWS AND REGULATIONS, AS WELL AS ALL ELD COMPLIANCE REGULATIONS,CONCERNING THE TRANSACTIONS CONTEMPLATED BY THIS AGREEMENT.THIS CONFIRMATION MUST BE SIGNED BY CARRIER AND RECEIVED BACK BY OURBOOKING OFFICE FOR PAYMENT.

ALL ACCESSORIALS MUST BE REQUESTED, WITH ALL RECEIPTS UPLOADED WITHIN 48 HOURS OF DELIVERY

Double Brokering this load will cause this contract to become Null &Void. Double Brokering is strictly prohibited!

Signature_____ Position_____ Date_____

Carrier Signature *Kelly Ivanovic* _____ Position_____ Date_____

Driver Name_____ Driver Cell_____

Tractor #_____ Trailer#_____

By doing business with NTG you fully agree with the terms and conditions listed herein and the terms and conditions listed in the NTG Broker-Carrier Agreement.

NTG LOAD # 8396617 must be included on your invoice with a copy of the POD or the invoice will not be paid

SEND ALL INVOICES and PODS TO: 244 Perimeter Center Pkwy NE Fourth Floor, Atlanta, GA 30346 POD@NTGFREIGHT.COM, or Fax to 678-569-1059. **WANT TO GET PAID FASTER?** NTG's exclusive carrier payment program offers permanent Net-1 & Net-2 day terms for a nominal fee. Learn more by contacting your carrier Carrier Sales Representative or visiting <http://www.NTGfreight.com/Carriers>. Broker agreement & rate confirmation must be completed, signed, and on file for payment on this load. \$200.00 will be deducted from the rate if the POD not received within 48 hours of scheduled delivery, or if this rate confirmation is used as a POD.

244 Perimeter Center Pkwy NE Fourth Floor, Atlanta, GA 30346

Nolan Transportation Group Rate Confirmation: Load # 8396617

CARRIER CONFIRMATION

Rate confirmation continued (page 2 / 2)

Commodity: perishable

1. Loads quoted as per bag are based on 850 bags. Any change in quantity will result in a different rate.
2. Loads quoted by CWT are based on 43000 lbs of product weight, any change will result in a different rate.
3. Driver responsible for count unless otherwise stated.
4. Driver must maintain reefer at temperature per bill of lading.
5. This is a produce load, pulp all product and record temperature on bill of lading.
6. Driver must call when loaded and check call daily before 10am or a fine of 100 dollars may be levied.
7. In the event of a shortage or damage NTG must be notified immediately or carrier assumes all responsibility for OSD.
8. Detention is on a per load basis, NTG not responsible for acts of God such as rain, hurricanes or other that may affect loading or unloading.
9. All carriers agree by signing this that they are CARB compliant and assume all responsibility thereof.
10. Unloading is the responsibility of the driver unless otherwise agreed to with NTG.
11. For flatbeds, onions will be rated on a per bag rate and need tarps unless otherwise stated.
12. Temperature sensitive foods may only be transported in equipment designed to maintain the proper temperature and normally functioning during transit.
13. Temperature requirements will be specified on the Bill-of-Lading (BOL), if required. Carrier must maintain the specified temperature throughout transit and be able to provide adequate measures to show the temperature was properly maintained.
14. For Less-than Trailer Load (LTL) shipments, appropriate measures must be taken to ensure that there is no cross-contamination or cross - contact with chemicals or allergens.
15. All personnel engaged in transportation operations for the Carrier must be properly trained and records of the training must be maintained.
16. Carrier must be able to provide records that demonstrate compliance with the Rule within 24-hours of request by NTG.
17. Vehicles provided for food transportation must be in sanitary condition prior to loading, must not have signs of pests, debris, foul odors, or spills, and must be free of damage that could lead to adulteration of food i.e. holes, leaks).
19. NTG must immediately be notified of any issue found that could compromise the integrity of the load.

Initial: _____

By doing business with NTG you fully agree with the terms and conditions listed herein and the terms and conditions listed in the NTG Broker-Carrier Agreement.

Please include our load number on your invoice with a copy of the proof of delivery. Invoices will not be paid without a P.O.D.!

SEND ALL INVOICES and PODS TO: 244 Perimeter Center Pkwy NE Fourth Floor, Atlanta, GA 30346 POD@NTGFREIGHT.COM, or Fax to 678-569-1059. **WANT TO GET PAID FASTER?** NTG's exclusive carrier payment program offers permanent Net-1 & Net-2 day terms for a nominal fee. Learn more by contacting your carrier Carrier Sales Representative or visiting <http://www.NTGFreight.com/Carriers> . Broker agreement & rate confirmation must be completed, signed, and on file for payment on this load. \$200.00 will be deducted from the rate if the POD not received within 48 hours of scheduled delivery, or if this rate confirmation is used as a POD.

1735 Founders Pkwy Suite 300, Alpharetta, GA 30009 TEL (678) 942-9666 FAX (770) 509-9612

Find Loads, Book Loads, Get Paid Fast.

beon Carrier

Beon Carrier gives you visibility and control of your business. Take advantage of enhanced load board features, rate visibility, bid and book options, real-time 1 Day and 2 Day payments and document management - all in one place!

Find Loads Hassle-free

Leverage lane preferences in Beon Carrier to receive optimized load options. With expanded equipment availabilities, carriers have access to a wide range of load preference selections.

Submit Bids & Book Loads

With Beon Carrier, you can view all relevant load details, such as loading hours, appointment times and weight information. Then, submit a bid on the load you want and book it with a single click.

Easy Tender Acceptance

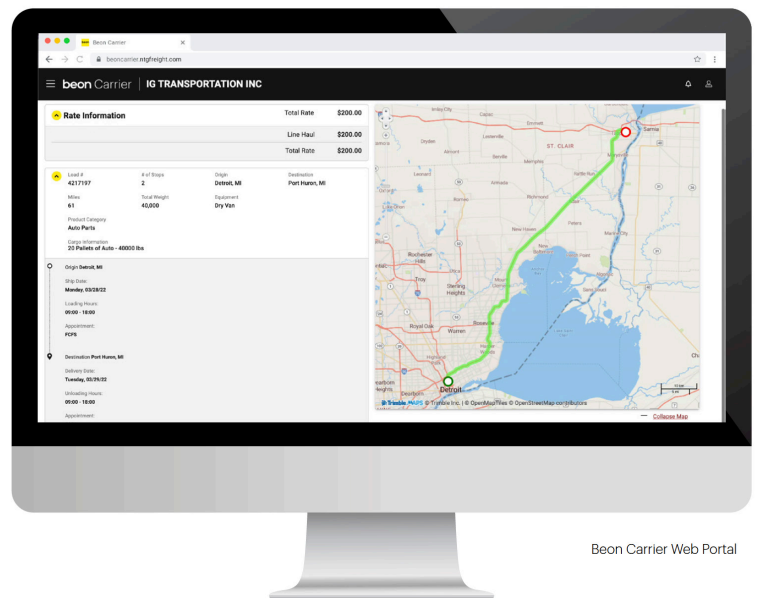
Beon Carrier makes it simple to manage your available tenders. Easily accept or decline freight tenders with the click of a button. For shipments specifically matched for you, simply accept, decline or submit a counteroffer from the tender section within Beon Carrier.

Get Paid Fast

Get paid faster with Beon Carrier – use our 1 Day and 2 Day Payment options that deposit cash directly into your checking account. Access load payment status and receive 24/7 support for any payment inquiries.

Manage Documents with Ease

Easily manage loads within Beon Carrier by uploading a picture of shipment documents. With this feature, your shipments and accessorials will be processed quickly.



LOG IN TODAY

Don't have an account? [Register](#) to get started!



Scan the QR Code to
Download the Beon
Carrier mobile app or
[Click Here](#)

Nolan Transportation Group Rate Confirmation: **Load # 8396617**

Carrier Sales Rep: GRADY EDWARDS
P: (854) 800-6029
E: GRADY.EDWARDS@NTGFREIGHT.COM

After Hours Contact
P: (470) 964-2024

General Information	Equipment: 53FT Van / Reefer	Commodity: Dry Food	Total Weight (lbs): 28800
# Of Stops: 2	# Of PALLETS: 18	Packaging Type: PALLETS	Reference #s: PO #: 46793366L
BL#:	CTR#:	MBOL#:	Load Requirements:

Origin Stop 1:

GOODWEST
48 Quarry Road,
Douglassville, PA 19518, USA

Business Hours: 08:00 - 12:00

***All details are exclusive to stop 1**

Ship Date: 03/22/25

Weight (lbs): 28800

Appt #:

Instructions: DRIVER RESPONSIBLE FOR CONFIRMING LOADED PC COUNT AND WEIGHT BEFORE LEAVING SHIPPER. FULL TRUCKLOAD, FTL - REQUIREMENTS:-If you will be late contact shipper to get new appointment time. Trailer must be Clean, Dry & Odor Free. Driver is responsible for securing load with not less than two straps and or two load locks, provided by driver. Per the signed accessorial agreement:-Penalty for Missed Pick Up: \$150. Penalty for Late Delivery: \$400.

Apt. Time: FCFS (see business hours)

Pickup #: 10047425

Stop Requirements:

Quantity: 18

Destination Stop 2:

MCLANE CAROLINA
7253 NC-48,
Battleboro, NC 27809-9183, USA

***All details are exclusive to stop 2**

Delivery Date: 03/24/25

Delivery #:

Appt #:

Instructions: \$400 MISSED/LATE APPT FEE. Must have POD within 15 minutes of delivery sent to erin.moriarty@ntgfreight.com APPT 3/24 10 AM

Apt. Time: 10:00

Quantity: 18

Weight (lbs): 28800

Stop Requirements:

Carrier Info

ZIGI FREIGHT INC (MC# 944686, DOT# 2828543)

Dispatcher: kelly@royal3inc.com

Phone: (630) 485-7370

Email: kelly@royal3inc.com

Driver Name: bryan

Driver Phone: +1 (561) 676-8014

Truck: 773

Trailer: tbd

Rate Details

\$900.00 Line Haul

\$320.00 Lumper

\$1220.00 Total

CARRIER TERMS AND CONDITIONS CONTINUED: //FAX BACK THIS CONFIRMATION SIGNED & COMPLETED TO FAX # LOCATED ON BOTTOM RIGHT OF THIS CONFIRMATION.FOR DISPATCH, DRIVER MUST CALL NTG TO ACTIVATE PICK UP# //SHOULD A PROBLEM OR CHANGE ARISE AT ANY TIME, NOTIFY NTG IMMEDIATELY, 24 / 7.RATE IS FOR EXCLUSIVE TRUCK ONLY UNLESS STATED IN WRITING.ALL FREIGHT TRAILERS MUST BE 10 YEARS OR NEWER.DO NOT SIGN FOR DAMAGED GOODS. NTG IS NOT RESPONSIBLE FOR OVERWEIGHT/ GROSS TRAILERS AFTER DRIVER HAS LEFT THE SHIPPER.IT IS CARRIER'S RESPONSIBILITY TO CONFIRM OR MAKE ANY NECESSARY APPOINTMENTS 24 HOURS IN ADVANCE, AND CONFIRM DELIVERY ADDRESS ON BILLS. IF DIFFERENT, CALL BOOKING OFFICE IMMEDIATELY FOR APPROVAL.ANY APPROVED CHANGES OR CHARGES MUST BE NOTED ON A NEW RATE CONFIRMATION SUPPLIED BY NTG.ALL LUMPERS AND / OR ACCESSORIAL FEES MUST BE PREAPPROVED BY NTG THROUGH A NEW RATE CONFIRMATION AND AN ORIGINAL RECEIPT SENT IN WITH CARRIER'S INVOICE IN ORDER TO BE REIMBURSED.DRIVER ASSIST AND FUEL SURCHARGE IS INCLUDED IN RATE.CARRIER REPRESENTS THERE ARE NO EXCLUSIONS IN THEIR INSURANCE POLICY THAT WOULD APPLY TO THE FREIGHT BEING TRANSPORTED. NTG DOES NOT ADVANCE FUNDS FOR ANY REASON.CARRIER SHALL COMPLY WITH ALL APPLICABLE FEDERAL, STATE, AND LOCAL LAWS AND REGULATIONS, AS WELL AS ALL ELD COMPLIANCE REGULATIONS, CONCERNING THE TRANSACTIONS CONTEMPLATED BY THIS AGREEMENT.THIS CONFIRMATION MUST BE SIGNED BY CARRIER AND RECEIVED BACK BY OURBOOKING OFFICE FOR PAYMENT.

ALL ACCESSORIALS MUST BE REQUESTED, WITH ALL RECEIPTS UPLOADED WITHIN 48 HOURS OF DELIVERY

Double Brokering this load will cause this contract to become Null &Void. Double Brokering is strictly prohibited!

Signature_____ Position_____ Date_____

Carrier Signature_____ Position_____ Date_____

Driver Name_____ Driver Cell_____

Tractor #_____ Trailer#_____

By doing business with NTG you fully agree with the terms and conditions listed herein and the terms and conditions listed in the NTG Broker-Carrier Agreement.

NTG LOAD # 8396617 must be included on your invoice with a copy of the POD or the invoice will not be paid

SEND ALL INVOICES and PODS TO: 244 Perimeter Center Pkwy NE Fourth Floor, Atlanta, GA 30346 POD@NTGFREIGHT.COM, or Fax to 678-569-1059. **WANT TO GET PAID FASTER?** NTG's exclusive carrier payment program offers permanent Net-1 & Net-2 day terms for a nominal fee. Learn more by contacting your carrier Carrier Sales Representative or visiting <http://www.NTGfreight.com/Carriers>. Broker agreement & rate confirmation must be completed, signed, and on file for payment on this load. \$200.00 will be deducted from the rate if the POD not received within 48 hours of scheduled delivery, or if this rate confirmation is used as a POD.

244 Perimeter Center Pkwy NE Fourth Floor, Atlanta, GA 30346

Nolan Transportation Group Rate Confirmation: Load # 8396617

CARRIER CONFIRMATION

Rate confirmation continued (page 2 / 2)

Commodity: perishable

1. Loads quoted as per bag are based on 850 bags. Any change in quantity will result in a different rate.
2. Loads quoted by CWT are based on 43000 lbs of product weight, any change will result in a different rate.
3. Driver responsible for count unless otherwise stated.
4. Driver must maintain reefer at temperature per bill of lading.
5. This is a produce load, pulp all product and record temperature on bill of lading.
6. Driver must call when loaded and check call daily before 10am or a fine of 100 dollars may be levied.
7. In the event of a shortage or damage NTG must be notified immediately or carrier assumes all responsibility for OSD.
8. Detention is on a per load basis, NTG not responsible for acts of God such as rain, hurricanes or other that may affect loading or unloading.
9. All carriers agree by signing this that they are CARB compliant and assume all responsibility thereof.
10. Unloading is the responsibility of the driver unless otherwise agreed to with NTG.
11. For flatbeds, onions will be rated on a per bag rate and need tarps unless otherwise stated.
12. Temperature sensitive foods may only be transported in equipment designed to maintain the proper temperature and normally functioning during transit.
13. Temperature requirements will be specified on the Bill-of-Lading (BOL), if required. Carrier must maintain the specified temperature throughout transit and be able to provide adequate measures to show the temperature was properly maintained.
14. For Less-than Trailer Load (LTL) shipments, appropriate measures must be taken to ensure that there is no cross-contamination or cross - contact with chemicals or allergens.
15. All personnel engaged in transportation operations for the Carrier must be properly trained and records of the training must be maintained.
16. Carrier must be able to provide records that demonstrate compliance with the Rule within 24-hours of request by NTG.
17. Vehicles provided for food transportation must be in sanitary condition prior to loading, must not have signs of pests, debris, foul odors, or spills, and must be free of damage that could lead to adulteration of food i.e. holes, leaks).
19. NTG must immediately be notified of any issue found that could compromise the integrity of the load.

Initial: _____

By doing business with NTG you fully agree with the terms and conditions listed herein and the terms and conditions listed in the NTG Broker-Carrier Agreement.

Please include our load number on your invoice with a copy of the proof of delivery. Invoices will not be paid without a P.O.D.!

SEND ALL INVOICES and PODS TO: 244 Perimeter Center Pkwy NE Fourth Floor, Atlanta, GA 30346 POD@NTGFREIGHT.COM, or Fax to 678-569-1059. **WANT TO GET PAID FASTER?** NTG's exclusive carrier payment program offers permanent Net-1 & Net-2 day terms for a nominal fee. Learn more by contacting your carrier Carrier Sales Representative or visiting <http://www.NTGFreight.com/Carriers> . Broker agreement & rate confirmation must be completed, signed, and on file for payment on this load. \$200.00 will be deducted from the rate if the POD not received within 48 hours of scheduled delivery, or if this rate confirmation is used as a POD.

1735 Founders Pkwy Suite 300, Alpharetta, GA 30009 TEL (678) 942-9666 FAX (770) 509-9612

Find Loads, Book Loads, Get Paid Fast.

beon Carrier

Beon Carrier gives you visibility and control of your business. Take advantage of enhanced load board features, rate visibility, bid and book options, real-time 1 Day and 2 Day payments and document management - all in one place!

Find Loads Hassle-free

Leverage lane preferences in Beon Carrier to receive optimized load options. With expanded equipment availabilities, carriers have access to a wide range of load preference selections.

Submit Bids & Book Loads

With Beon Carrier, you can view all relevant load details, such as loading hours, appointment times and weight information. Then, submit a bid on the load you want and book it with a single click.

Easy Tender Acceptance

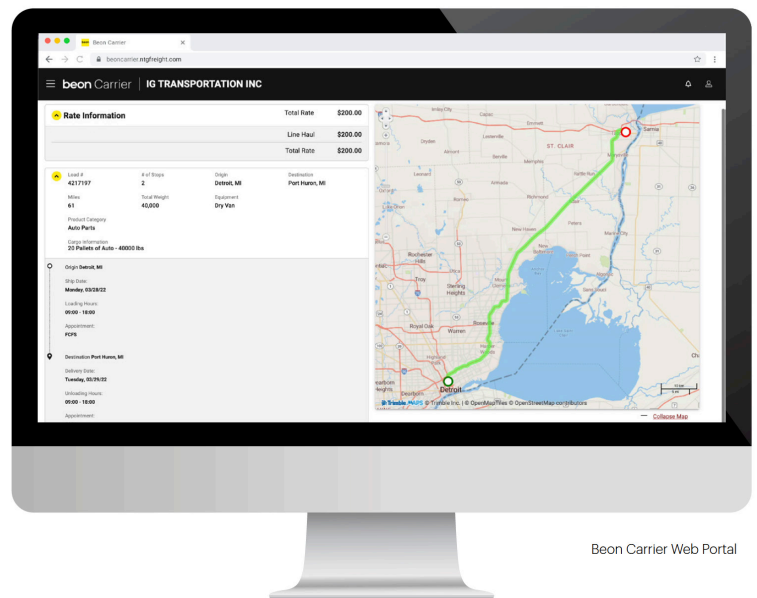
Beon Carrier makes it simple to manage your available tenders. Easily accept or decline freight tenders with the click of a button. For shipments specifically matched for you, simply accept, decline or submit a counteroffer from the tender section within Beon Carrier.

Get Paid Fast

Get paid faster with Beon Carrier – use our 1 Day and 2 Day Payment options that deposit cash directly into your checking account. Access load payment status and receive 24/7 support for any payment inquiries.

Manage Documents with Ease

Easily manage loads within Beon Carrier by uploading a picture of shipment documents. With this feature, your shipments and accessorials will be processed quickly.



LOG IN TODAY

Don't have an account? [Register](#) to get started!



Scan the QR Code to
Download the Beon
Carrier mobile app or
[Click Here](#)



BOL NO: 46793366L

BILL OF LADING**Shipper**

SUNNY SKY PRODUCTS - DOUGLASSVILLE
48 QUARRY ROAD
DOUGLASSVILLE, PA 19518
LOGISTICS, jfroehlich@sunnyskyproducts.com

Carrier: NOLAN TRANSPORTATION

Trailer Number:

Seal Number: 27261524

Pickup Date: 03/22/2025

PRO LABEL HERE

Consignee

McLane North Carolina
7253 NC 48
Battleboro, NC 27809

References

SO Number: 10047425

Additional PO Number: NC10080839-01

Bill To

SUNNY SKY PRODUCTS LLC C/O
TRANSPORTATION INSIGHT
PO BOX 23000
HICKORY, NC 28603

Freight TermsPrepaid: XCollect: 3rd Party: **Special Instructions**

FULL TRUCKLOAD, FTL - REQUIREMENTS: If you will be late contact shipper to get new appointment time. Trailer must be Clean, Dry & Odor Free. Driver is responsible for securing load with not less than two straps and or two load locks, provided by driver. Per the signed accessorial agreement: Penalty for Missed Pick Up: \$150. Penalty for Late Delivery: \$400. LESS THAN TRUCKLOAD, LTL - REQUIREMENTS: Do Not Stack Pallets! Deliver Upon Arrival; Do Not Hold @ Terminal unless Appt. is Required from Consignee & They Request a Specific Date. CARRIER MUST UPDATE TRACKING STATUS IN TRANSPORTATION INSIGHT TMS. Shipper Inst: DRIVER MUST ARRIVE BY 12 PM
Consignee Inst: APPT 3/24 10 AM

Accessorial

Qty	Type	Weight	Unit	HM (X)	NMFC	PO #	Item Description	LTL Class
1200	BOX	28800	lb		073260	NC10080839-01	Trailer Cream Products, shells abt	65
						Total Rec'd:	<u>1200</u>	
						Rec'd By:	<u>[Signature]</u>	
						Driver		
						Signature:	<u>[Signature]</u>	
1200		28,800				TOTAL PALLET: 18	LINEAL FT: <u>118</u>	VOLUME TOTAL: <u>18</u> GRS
Hazardous Material Contact Phone Number:						Seal #:	Where the rate is dependent on value, shippers are required to state specifically in writing the agreed or declared value of the property as follows: "The agreed or declared value of the property is specifically stated by the shipper to be not exceeding _____ per _____"	
Customer Registered w/Emergency Response Info						Seal Intact:	Rem: <u>NO</u> Driver Unload Y / N	
						COD Type:		
						COD Amount:		
Note: Liability limitation for loss or damage in this shipment may be applicable. See 49 USC 14706(c)(1)(A) and (B).								
Received, subject to individually determined rates or contracts that have been agreed upon in writing between the carrier and shipper, if applicable, otherwise to the rates, classifications and rules that have been established by the carrier and are available to the shipper, on request, and to all applicable state and federal regulations.						Trailer by Shipper by Driver		Freight by Shipper by Driver
Shipper Signature/Date: <u>3/22/25</u>						Carrier Signature/Pickup Date:		
This is to certify that the above named materials are properly classified, described, packaged, marked and labeled and are in proper condition for transportation according to the applicable regulations of the Department of Transportation.						Carrier acknowledges receipt of packages and required placards. Carrier certifies emergency response information was made available and/or carrier has the Department of Transportation emergency response guidebook or equivalent documentation in vehicle. Property described above is received in good order, except as noted.		
Shipper:						Carrier:		
Consignee acknowledges receipt of goods. Please note any shortages or damages on BOL upon delivery.						Consignee:		



McLane Carolina Gate Pass

This pass MUST be returned to security when you exit the site.

Date: 3/24/25 Time In: 07:55 Time Out: _____

Door Assignment #:

ATTENTION DRIVERS

- Wheels must be chocked.
- Absolutely NO Laying Over on McLane Property.
- A supervisor must inspect your trailer before you leave.

Driver, please complete this section of the Gate Pass before checking in at the Receiving Office.

Carrier #: Royal 3

Purchase Order #: NC10080839-01

Truck #: 773

In Trailer #: W97034 Out Trailer #: _____

Pallets returned: _____

Product returned: _____

Reason for return: _____

Supervisor name (please print): _____

Supervisor signature: _____

Approved signatures required for trailers, NO EXCEPTIONS.

Chris Watts	Laura Dehart	Diquita Battle	Endia Hilliard
Angel Canteen	Dorenda Best	Earl Battle	Everton Jones
Shemekie Silver	Silvia Sharpe	Akayla Dickens	Todd Bailey
Julia Morton	Dikita Battle	David Garrett	Art Garcia
	Keith Conyers	Stanley Ricks	

ATTENTION DRIVERS

BY SIGNING THIS DOCUMENT, YOU STATE THAT YOU UNDERSTAND AND ACCEPT FULL RESPONSIBILITY FOR:

1. Chocking wheels, or any issues that arise because of wheels being improperly chocked or not at all.
2. No driver is permitted inside the McLane facility.
3. Outside bathroom facilities are available for your use.
4. When the seal is removed, place all paperwork in the back of your trailer.
5. You will remain in your truck and the unloading service will be your primary point of contact.
6. The unloading service will also authorize your departure.
7. Capstone is your unloading service, and the contact number is: 252-973-6844. Call this number to check in.
8. Text "start" to 1-833-402-8967 to opt in for text messages
9. We are paperless and will no longer print receipts. We can email you a receipt.
10. Inglés limitado, necesitará un traductor para realizar su proceso de registro.

Load Locks: Yes ☒ No ☐ if yes, how many? _____

Carrier: Royal 3 Trailer # W77034

Tractor 773

Driver's Name: Bryan

Driver's Signature: [Signature]

Driver's Phone number: 561-676-8014

Driver's Email: bryan-370@LIVE.COM

Capstone Logistics

30 TECHNOLOGY PKWY SOUTH SUITE 200
PEACHTREE CORNERS, GA 30092
770-414-1929
FED ID# 45-3087555

10:39:11 March 24, 2025

Receipt #:	7e0a76bd-d2e6-4f94-afb0-326372675b95
Location:	MCLANE CAROLINA (BATTLEBORO) NC
Work Date:	2025-03-24
Bill Code:	RCOD30486
Carrier:	ROYAL 3
Dock:	DRY
Door:	16
Purchase Orders	Vendor
NC1008083901	SUNNY SKY GW

Total Initial Pallets:	18.00
Total Finished Pallets:	19
Total Case Count:	1200
Total Weight:	25968.00
Trailer Number:	97034
Tractor Number:	
BOL:	
Comments:	
Canned Comments:	
Unloaders:	1

Add Fee	
PO: NC1008083901	
Upstack	\$180.00
Total Add Charges:	\$180.00
Base Charge:	130.00
Convenience Fee:	10.00
Total Cost:	320.00
Payments:	Amount
CapstonePay-36329509	\$320.00
Total Payments	\$320.00