



# INVOICE

**BILL TO:**

NOLAN TRANSPORTATION GROUP LLC  
400 NORTHRIDGE RD STE 1000  
ATLANTA, GA 30350

**INVOICE DATE:** 01/03/2025**INVOICE #:** B71701**TERMS:** NET 30**DUE DATE:** 02/03/2025

DATE	CUSTOMER REF#	ORIGIN - DESTINATION	QUANTITY	RATE	AMOUNT
01/03/2025		29555 Southwest Boones Ferry Road, Wilsonville, OR 97070, USA - 7075 Trade Center Avenue, Billings, MT 59101, USA			
		Freight Income	1	\$150.00	\$150.00

**TOTAL**

\$150.00

**PLEASE NOTE**

The right to payment under this invoice has been assigned to Compass payment Solutions LLC (CFS) and all payments hereunder are to be directed to the assignee at the address noted below.

Remittances to other than CFS do not constitute payment of this invoice. CFS must be given notification of any claims, agreements or merchandise returns which would affect the payment of all or part of this Invoice on the due date.

**COMPASS FUNDING SOLUTIONS LLC****P.O.BOX 205154****DALLAS, TX 75320-5154****Tel: 844-899-8092**

# Nolan Transportation Group, LLC

## CARRIER CONFIRMATION: NTG LOAD # 8215031

**CARRIER SALES REP:** GRADY EDWARDS

**AFTER HOURS & WEEKEND:**

**P:** (854) 800-6029 Ext 1464

**P:** (470) 964-2024

**E:** GRADY.EDWARDS@NTGFREIGHT.COM

**E:**

**CARRIER** BRZ (MC# 86875)

**OFFICE:**

**BOOKED WITH:**

**PHONE:** (708) 303-5150

**FAX:**

**EQUIPMENT REQUIRED:** V/R

**REFERENCE NUMBERS:** PO #: 8197527

**CHARGES:** \$0.00 LINE HAUL

\$150.00 TONU - appts set in the load were changed and carrier had the wrong date

**\$150.00 TOTAL**

CARRIER TERMS AND CONDITIONS CONTINUED: //FAX BACK THIS CONFIRMATION SIGNED & COMPLETED TO FAX # LOCATED ON BOTTOM RIGHT OF THIS CONFIRMATION. FOR DISPATCH, DRIVER MUST CALL NTG TO ACTIVATE PICK UP# //SHOULD A PROBLEM OR CHANGE ARISE AT ANY TIME, NOTIFY NTG IMMEDIATELY, 24/7. RATE IS FOR EXCLUSIVE TRUCK ONLY UNLESS STATED IN WRITING. ALL FREIGHT TRAILERS MUST BE 10 YEARS OR NEWER. DO NOT SIGN FOR DAMAGED GOODS. NTG IS NOT RESPONSIBLE FOR OVERWEIGHT/GROSS TRAILERS AFTER DRIVER HAS LEFT THE SHIPPER. IT IS CARRIER'S RESPONSIBILITY TO CONFIRM OR MAKE ANY NECESSARY APPOINTMENTS 24 HOURS IN ADVANCE, AND CONFIRM DELIVERY ADDRESS ON BILLS. IF DIFFERENT, CALL BOOKING OFFICE IMMEDIATELY FOR APPROVAL. ANY APPROVED CHANGES OR CHARGES MUST BE NOTED ON A NEW RATE CONFIRMATION SUPPLIED BY NTG. ALL LUMPERS AND/OR ASSESSORIAL FEES MUST BE PREAPPROVED BY NTG THROUGH A NEW RATE CONFIRMATION AND AN ORIGINAL RECEIPT SENT IN WITH CARRIER'S INVOICE IN ORDER TO BE REIMBURSED. DRIVER ASSIST AND FUEL SURCHARGE IS INCLUDED IN RATE. CARRIER REPRESENTS THERE ARE NO EXCLUSIONS IN THEIR INSURANCE POLICY THAT WOULD APPLY TO THE FREIGHT BEING TRANSPORTED. NTG DOES NOT ADVANCE FUNDS FOR ANY REASON. CARRIER SHALL COMPLY WITH ALL APPLICABLE FEDERAL, STATE, AND LOCAL LAWS AND REGULATIONS, AS WELL AS ALL ELD COMPLIANCE REGULATIONS, CONCERNING THE TRANSACTIONS CONTEMPLATED BY THIS AGREEMENT. THIS CONFIRMATION MUST BE SIGNED BY CARRIER AND RECEIVED BACK BY OUR BOOKING OFFICE FOR PAYMENT.

**STOP: 1 of 1**

<b>PICK-UP</b> <b>1/3/2025 Hours: 07:00-15:30 FCFS</b> WYMORE TRANSFER CO2 29555 SOUTHWEST BOONES FERRY ROAD WILSONVILLE, OR 97070	<b>DELIVER</b> <b>1/3/2025 Hours: 08:00-15:00 FCFS</b> HIGH COUNTRY CCBC BILLINGS MT 7075 TRADE CENTER AVENUE BILLINGS, MT 59101
<b>CONTACT</b> <b>SHIPMENT DESCRIPTION</b> 22 ADDENDUM 42647LBS <b>PICKUP DESCRIPTION</b> ShipmentID: 309894450 PO#: 199190 Carrier responsible to ensure trailer is sealed and seal intact or load will be rejected by consignee. Carrier responsible for freight claims associated with seals. Driver to provide at least 2 load locks to secure cargo & that shipper utilized airbags in trailer PRIOR to sealing trailer. Driver responsible for shifts/damage due to improper securing. For issues contact NTG prior to leaving shipper. If reefer, set temp 32F degrees cont. or as listed on BOL. Dry shipments cannot stay on dry trailer >7 days	<b>CONTACT</b> <b>SHIPMENT DESCRIPTION</b> 22 ADDENDUM 42647LBS <b>DELIVER DESCRIPTION</b> PO#: 199190 PROTECT FROM FREEZING From WILSONVILLE,OR To BILLINGS,MT Pickup JAN-06-25 Drop JAN-08-25. Carriers Required to Arrive On Time for the Appointment // Any Delay (Loading/In-Transit/Unloading) Must be Communicated to NTG Immediately. // GPS Tracking Must be Accepted Prior to Driver Arriving at Shipping Facility and GPS Tracking Must be maintained throughout entire transit until load has been delivered. // Carriers must submit paperwork with arrival and departure times that is notated by the facility, within 24 hours of delivery at the final stop including accessorial Request.

**Double Brokering this load will cause this contract to become Null & Void. Double Brokering is strictly prohibited!**

Signature \_\_\_\_\_ Position \_\_\_\_\_ Date \_\_\_\_\_

Carrier Signature \_\_\_\_\_ Position \_\_\_\_\_ Date \_\_\_\_\_

Driver Name \_\_\_\_\_ Driver cell \_\_\_\_\_

Tractor # \_\_\_\_\_ Trailer# \_\_\_\_\_

By doing business with NTG you fully agree with NTG terms & conditions listed in the NTG broker agreement, carrier packet, and terms and conditions document located at [www.terms.ntgfreight.com](http://www.terms.ntgfreight.com).

**NTG LOAD # 8215031 MUST BE INCLUDED ON YOUR INVOICE WITH A COPY OF THE P.O.D! Invoices will not be paid without a P.O.D!**

SEND ALL INVOICES and PODS TO: 400 Northridge, Suite 1000, Atlanta, GA 30350, [POD@NTGFREIGHT.COM](mailto:POD@NTGFREIGHT.COM), or Fax to 678-569-1059.

**WANT TO GET PAID FASTER?** NTG's exclusive carrier payment program offers permanent Net-1 & Net-2 day terms for a nominal fee. Learn more by contacting your Carrier Sales Representative or visiting [www.NTGfreight.com/Carriers](http://www.NTGfreight.com/Carriers). Broker agreement & rate confirmation must be completed, signed, and on file for payment on this load. If CARRIER cannot supply NTG with the original proof of delivery, NTG reserves the right to obtain a proof of delivery, withhold all payments to CARRIER indefinitely and charge CARRIER a \$50.00 fee.

400 Northridge, Suite 1000, Atlanta, GA 30350

# Nolan Transportation Group

## CARRIER CONFIRMATION

Rate confirmation continued (page 2/2)

Commodity: perishable

1. Loads quoted as per bag are based on 850 bags. Any change in quantity will result in a different rate.
2. Loads quoted by CWT are based on 43000 lbs of product weight, any change will result in a different rate.
3. Driver responsible for count unless otherwise stated.
4. Driver must maintain reefer at temperature per bill of lading.
5. This is a produce load, pulp all product and record temperature on bill of lading.
6. Driver must call when loaded and check call daily before 10am or a fine of 100 dollars may be levied.
7. In the event of a shortage or damage NTG must be notified immediately or carrier assumes all responsibility for OSD.
8. Detention is on a per load basis, NTG not responsible for acts of God such as rain, hurricanes or other that may affect loading or unloading.
9. All carriers agree by signing this that they are CARB compliant and assume all responsibility thereof.
10. Unloading is the responsibility of the driver unless otherwise agreed to with NTG.
11. For flatbeds, onions will be rated on a per bag rate and need tarps unless otherwise stated.
12. Temperature sensitive foods may only be transported in equipment designed to maintain the proper temperature and normally functioning during transit.
13. Temperature requirements will be specified on the Bill-of-Lading (BOL), if required. Carrier must maintain the specified temperature throughout transit and be able to provide adequate measures to show the temperature was properly maintained.
14. For Less-than Trailer Load (LTL) shipments, appropriate measures must be taken to ensure that there is no cross-contamination or cross-contact with chemicals or allergens.
15. All personnel engaged in transportation operations for the Carrier must be properly trained and records of the training must be maintained.
16. Carrier must be able to provide records that demonstrate compliance with the Rule within 24-hours of request by NTG.
17. Vehicles provided for food transportation must be in sanitary condition prior to loading, must not have signs of pests, debris, foul odors, or spills, and must be free of damage that could lead to adulteration of food (i.e. holes, leaks).
18. Carrier will provide evidence to NTG of transportation traceability, including information regarding previous cargo hauled in bulk or in other equipment; and maintenance and intervening cleaning procedures for docks and equipment.
19. NTG must immediately be notified of any issue found that could compromise the integrity of the load.

Initial: .....

By doing business with NTG you fully agree with NTG terms & conditions listed in the NTG broker agreement, carrier packet, and terms and conditions document located at [www.terms.ntgfreight.com](http://www.terms.ntgfreight.com).

**Please include our load number on your invoice with a copy of the proof of delivery. Invoices will not be paid without a P.O.D.!**

SEND ALL INVOICES and PODS TO: 1735 Founders Pkwy Suite 300, Alpharetta, GA 30009 [POD@NTGFREIGHT.COM](mailto:POD@NTGFREIGHT.COM), or Fax to 678-569-1059.

**WANT TO GET PAID FASTER?** NTG's exclusive carrier payment program offers permanent Net-1 & Net-2 day terms for a nominal fee. Learn more by contacting your carrier Carrier Sales Representative or visiting [www.NTGFreight.com/Carriers](http://www.NTGFreight.com/Carriers). Broker agreement & rate confirmation must be completed, signed, and on file for payment on this load. 200.00 WILL BE DEDUCTED FROM RATE IF POD IS NOT RECEIVED WITHIN 48 HOURS OF SCHEDULED DELIVERY, OR IF THIS RATE CONFIRMATION IS USED AS A POD!

400 Northridge Suite 1000, Atlanta, GA 30350

# Find Loads, Book Loads, Get Paid Fast.

beon Carrier

**Beon Carrier gives you visibility and control of your business. Take advantage of enhanced load board features, rate visibility, bid and book options, real-time 1 Day and 2 Day payments and document management - all in one place!**

## Find Loads Hassle-free

Leverage lane preferences in Beon Carrier to receive optimized load options. With expanded equipment availabilities, carriers have access to a wide range of load preference selections.

## Submit Bids & Book Loads

With Beon Carrier, you can view all relevant load details, such as loading hours, appointment times and weight information. Then, submit a bid on the load you want and book it with a single click.

## Easy Tender Acceptance

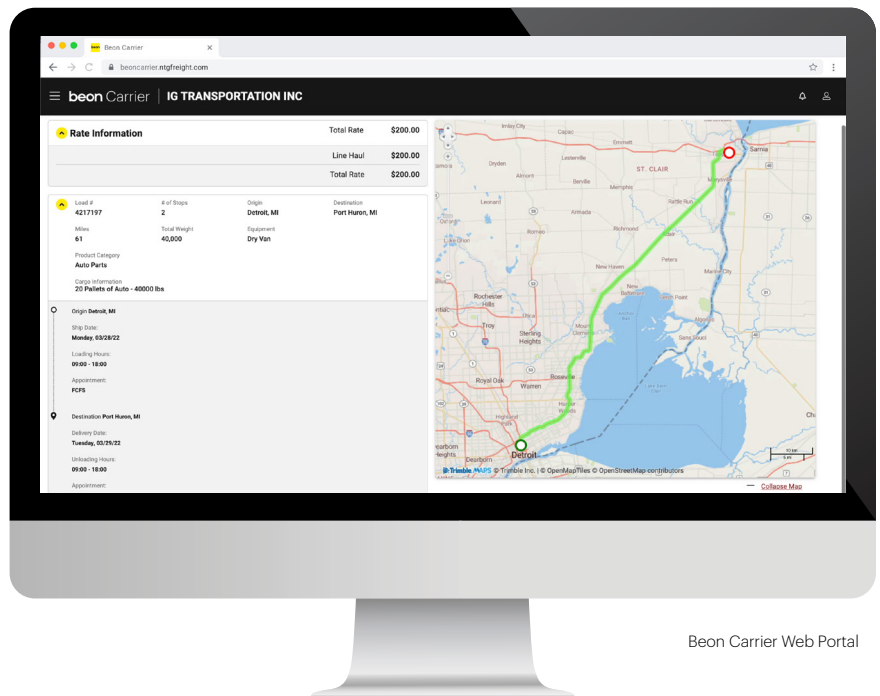
Beon Carrier makes it simple to manage your available tenders. Easily accept or decline freight tenders with the click of a button. For shipments specifically matched for you, simply accept, decline or submit a counteroffer from the tender section within Beon Carrier.

## Get Paid Fast

Get paid faster with Beon Carrier – use our 1 Day and 2 Day Payment options that deposit cash directly into your checking account. Access load payment status and receive 24/7 support for any payment inquiries.

## Manage Documents with Ease

Easily manage loads within Beon Carrier by uploading a picture of shipment documents. With this feature, your shipments and accessorials will be processed quickly.



Beon Carrier Web Portal

**LOG IN TODAY**

Don't have an account? **Register** to get started!

## COCA-COLA - LIBERTY General Requirements

**When Entering thru Luzerne Street Gate have Tandems pulled all the way toward driver**

- Must follow all facility safety protocols as outlined below.
  - Slide tandems all the way back when in yard to back into docks
  - Disengage the airline
  - Chock your wheels
  - **Cannot disconnect from a trailer at any point while in the yard or on the facility.**
    - Wait for the clerk to call you to come get your paperwork
    - **DO NOT PULL OFF UNTIL TOLD TO DO SO.**
- **ALL TRUCKS TO LEAVE THROUGH ERIE AVENUE**
- **Closed toed shoes only permitted**
  - **NO SLIDES, SLIPPERS, OR SANDALS- NO OPEN TOE FOOTWEAR ALLOWED**
- No children or pets
  - All guests must stay in the tractor- No leaving the facility once inside

## COCA-COLA - LIBERTY Location Specific

**725 E ERIE AVE Philadelphia PA**

- **Park Between Whitaker Ave. and G street on Luzerne Street**
- **DO NOT DOUBLE PARK ON ANY STREET AROUND THE FACILITY**
  - **You will not be allowed to check in until you are safely parked on the street**
- Check in with Guard shack at the Luzerne Street entrance.
  - You will need to give the guard your PO#, and working phone number
    - No International Numbers
    - Ensure the correct phone number is entered into the system
  - Wait for further instructions on getting assigned a door
    - Clerk will call you to assign the Dock you will use to be loaded or unloaded.

- DO NOT ASK TO DROP YOUR TRAILER IN THE YARD OR ATTEMPT TO- YOU WILL BE REMOVED FROM THE FACILITY AND LOAD REFUSED.

**COCA-COLA NORTH AMERICA CHICO:**

**Pick Up and Delivery General Requirements**

Before the driver checks in at the facility, NTG will need the following information for the pre check in process

- DRIVER FULL NAME (AS IT APPEARS ON DRIVERS LICENSE)
- DRIVER LICENSE#
- TRUCK#
- TRUCK LICENSE PLATE#
- TRAILER#

If any of the above information changes **BEFORE** the driver goes into the shipper, these changes **MUST** be communicated to the NTG ASAP otherwise the driver will not be allowed to check in at the shipper.

## **Atlanta Syrup Branch Pick and Delivery Policy**

### **Driver Instructions for LIVE LOADS:**

1. Upon security clearance at the front gate, proceed forward and make a right turn and cross the tracks. You will then look left and pull into an empty parking space.
2. Remain in your truck until the yard jockey directs you to a door.
3. You must **slide your tandems and unhook** your trailer prior to being loaded.
4. Once your load is complete the yard jockey will notify you and you need to immediately clear the dock and proceed to the guard house for your BOL.
  - a. **If you get out of your truck for any reason, you must have on your High Visibility vest.**

### **Driver Instructions for DROP LOADS & DELIVERIES:**

1. If you are dropping off dunnage, corrugate, Scholle bags or CHEP pallets, place paperwork in the drop box located on the wall in the receiving office.
2. Drivers that are live unloading will report to the receiving window for instructions.
  - a. **If you get out of your truck for any reason, you must have on your High Visibility vest.**