



INVOICE

BILL TO:

NOLAN TRANSPORTATION GROUP LLC
400 NORTHRIDGE RD STE 1000
ATLANTA, GA 30350

INVOICE DATE: 11/14/2024**INVOICE #:** R62950**TERMS:** NET 30**DUE DATE:** 12/14/2024

DATE	CUSTOMER REF#	ORIGIN - DESTINATION	QUANTITY	RATE	AMOUNT
10/25/2024		9680 OH-199, Carey, OH 43316, USA - 7243 Grady Niblo Road, Dallas, TX 75236, USA			
		Freight Income	1	\$2,250.00	\$2,250.00
		Lumper	1	\$240.00	\$240.00
		Detention	1	\$240.00	\$240.00

Payments:

DATE	METHOD	CHECK#	CHECK DATE	REFERENCE	AMOUNT
10/28/2024	Direct Deposit	687556	10/28/2024	687556	\$2,250.00
11/12/2024	Direct Deposit	693136	11/12/2024	693136	\$0.00

TOTAL
\$480.00

PLEASE NOTE

The right to payment under this invoice has been assigned to Compass payment Solutions LLC (CFS) and all payments hereunder are to be directed to the assignee at the address noted below.

Remittances to other than CFS do not constitute payment of this invoice. CFS must be given notification of any claims, agreements or merchandise returns which would affect the payment of all or part of this Invoice on the due date.

COMPASS FUNDING SOLUTIONS LLC

P.O.BOX 205154

DALLAS, TX 75320-5154

Tel: 844-899-8092

Nolan Transportation Group Rate Confirmation: **Load # 8004224**

Carrier Sales Rep: GRADY EDWARDS
P: (854) 800-6029
E: GRADY.EDWARDS@NTGFREIGHT.COM

After Hours Contact
P: (470) 964-2024

General Information	Equipment: 53FT Dry Van	Commodity: Dry Food	Total Weight (lbs): 37929.81
# Of Stops: 2	# Of PALLETS: 19	Packaging Type: PALLETS	Reference #s: PO #: RS41287772
BL#: SH2410-11060	CTR#:	MBOL#:	<u>Load Requirements:</u>

Origin Stop 1:

KALMBACH FEEDS INC.
5968 OH-199,
Carey, OH 43316, USA

***All details are exclusive to stop 1**

Ship Date: 10/25/24 **Apt. Time:** 12:30 **Quantity:** 19 **Weight (lbs):** 37929.81

Pickup #: RS41287772

Appt #:

Stop Requirements:

Instructions: Keep the trailer sealed. Breaking the seal without NTG's written consent may result in a claim..

GPS COMPLIANCE REQUIRED FOR ACCESSORIALS—MUST BE ACCEPTED PRIOR TO PICKUP ARRIVAL & KEPT THROUGH TRANSIT. NTG MUST BE NOTIFIED AT 1.5 HOUR MARK OF WAIT TIME AND POD MUST BE SUBMITTED WITHIN 48 HRS FOR APPROVAL. IN/OUT TIMES MUST BE INCLUDED ON POD. \$40 / HOUR FOR DETENTION IF ABOVE FOLLOWED AND ONTIME ARRIVAL HIT (CAPPED AT \$250).

Destination Stop 2:

DFW1
7243 Grady Niblo Road,
Dallas, TX 75236, USA

***All details are exclusive to stop 2**

Delivery Date: 10/28/24 **Apt. Time:** 10:00 **Quantity:** 19 **Weight (lbs):** 37929.81

Delivery #: RS41287772

Appt #:

Stop Requirements:

Instructions: 24-48 Hr Offload at the Receiving Facility *Weekends Excluded*. Receiver will contact carrier once trailer is empty and ready for pick up // Overweight claims must be verified with a certified scale ticket, shipper will adjust accordingly. Driver needs minimum three straps or load bars to properly secure cargo. NTG not responsible for charges incurred if carrier does not have necessary equipment to secure freight. GPS COMPLIANCE REQUIRED FOR ACCESSORIALS—MUST BE ACCEPTED PRIOR TO PICKUP & THROUGH TRANSIT.

Carrier Info

ROYAL3 INC (MC# 944686, DOT# 2828543)

Dispatcher: milo

Phone: (630) 485-7370

Email: milo@royal3inc.com

Driver Name: tbd

Driver Phone: +1 (111) 111-1111

Truck: 111

Trailer: 222

Rate Details

\$2250.00 Line Haul

\$2250.00 Total

CARRIER TERMS AND CONDITIONS CONTINUED: //FAX BACK THIS CONFIRMATION SIGNED & COMPLETED TO FAX # LOCATED ON BOTTOM RIGHT OF THIS CONFIRMATION. FOR DISPATCH, DRIVER MUST CALL NTG TO ACTIVATE PICK UP# //SHOULD A PROBLEM OR CHANGE ARISE AT ANY TIME, NOTIFY NTG IMMEDIATELY. 24 / 7. RATE IS FOR EXCLUSIVE TRUCK ONLY UNLESS STATED IN WRITING. ALL FREIGHT TRAILERS MUST BE 10 YEARS OR NEWER. DO NOT SIGN FOR DAMAGED GOODS. NTG IS NOT RESPONSIBLE FOR OVERWEIGHT/ GROSS TRAILERS AFTER DRIVER HAS LEFT THE SHIPPER. IT IS CARRIER'S RESPONSIBILITY TO CONFIRM OR MAKE ANY NECESSARY APPOINTMENTS 24 HOURS IN ADVANCE, AND CONFIRM DELIVERY ADDRESS ON BILLS. IF DIFFERENT, CALL BOOKING OFFICE IMMEDIATELY FOR APPROVAL. ANY APPROVED CHANGES OR CHARGES MUST BE NOTED ON A NEW RATE CONFIRMATION SUPPLIED BY NTG. ALL LUMPERS AND / OR ASSESSORIAL FEES MUST BE PREAPPROVED BY NTG THROUGH A NEW RATE CONFIRMATION AND AN ORIGINAL RECEIPT SENT IN WITH CARRIER'S INVOICE IN ORDER TO BE REIMBURSED. DRIVER ASSIST AND FUEL SURCHARGE IS INCLUDED IN RATE. CARRIER REPRESENTS THERE ARE NO EXCLUSIONS IN THEIR INSURANCE POLICY THAT WOULD APPLY TO THE FREIGHT BEING TRANSPORTED. NTG DOES NOT ADVANCE FUNDS FOR ANY REASON. CARRIER SHALL COMPLY WITH ALL APPLICABLE FEDERAL, STATE, AND LOCAL LAWS AND REGULATIONS, AS WELL AS ALL ELD COMPLIANCE REGULATIONS, CONCERNING THE TRANSACTIONS CONTEMPLATED BY THIS AGREEMENT. THIS CONFIRMATION MUST BE SIGNED BY CARRIER AND RECEIVED BACK BY OUR BOOKING OFFICE FOR PAYMENT.

ALL ACCESSORIALS MUST BE REQUESTED, WITH ALL RECEIPTS UPLOADED WITHIN 48 HOURS OF DELIVERY

Double Brokering this load will cause this contract to become Null & Void. Double Brokering is strictly prohibited!

Signature _____ Position _____ Date _____

Carrier Signature _____ Position _____ Date _____

Driver Name _____ Driver Cell _____

Tractor # _____ Trailer# _____

By doing business with NTG you fully agree with the terms and conditions listed herein and the terms and conditions listed in the NTG Broker-Carrier Agreement.

NTG LOAD # 8004224 must be included on your invoice with a copy of the POD or the invoice will not be paid

SEND ALL INVOICES and PODS TO: 244 Perimeter Center Pkwy NE Fourth Floor, Atlanta, GA 30346 POD@NTGFREIGHT.COM, or Fax to 678-569-1059. **WANT TO GET PAID FASTER?** NTG's exclusive carrier payment program offers permanent Net-1 & Net-2 day terms for a nominal fee. Learn more by contacting your carrier Carrier Sales Representative or visiting <http://www.NTGFreight.com/Carriers>. Broker agreement & rate confirmation must be completed, signed, and on file for payment on this load. \$200.00 will be deducted from the rate if the POD is not received within 48 hours of scheduled delivery, or if this rate confirmation is used as a POD.

Nolan Transportation Group Rate Confirmation: **Load # 8004224**

CARRIER CONFIRMATION

Rate confirmation continued (page 2 / 2)

Commodity: perishable

1. Loads quoted as per bag are based on 850 bags. Any change in quantity will result in a different rate.
2. Loads quoted by CWT are based on 43000 lbs of product weight, any change will result in a different rate.
3. Driver responsible for count unless otherwise stated.
4. Driver must maintain reefer at temperature per bill of lading.
5. This is a produce load, pulp all product and record temperature on bill of lading.
6. Driver must call when loaded and check call daily before 10am or a fine of 100 dollars may be levied.
7. In the event of a shortage or damage NTG must be notified immediately or carrier assumes all responsibility for OSD.
8. Detention is on a per load basis, NTG not responsible for acts of God such as rain, hurricanes or other that may affect loading or unloading.
9. All carriers agree by signing this that they are CARB compliant and assume all responsibility thereof.
10. Unloading is the responsibility of the driver unless otherwise agreed to with NTG.
11. For flatbeds, onions will be rated on a per bag rate and need tarps unless otherwise stated.
12. Temperature sensitive foods may only be transported in equipment designed to maintain the proper temperature and normally functioning during transit.
13. Temperature requirements will be specified on the Bill-of-Lading (BOL), if required. Carrier must maintain the specified temperature throughout transit and be able to provide adequate measures to show the temperature was properly maintained.
14. For Less-than Trailer Load (LTL) shipments, appropriate measures must be taken to ensure that there is no cross-contamination or cross - contact with chemicals or allergens.
15. All personnel engaged in transportation operations for the Carrier must be properly trained and records of the training must be maintained.
16. Carrier must be able to provide records that demonstrate compliance with the Rule within 24-hours of request by NTG.
17. Vehicles provided for food transportation must be in sanitary condition prior to loading, must not have signs of pests, debris, foul odors, or spills, and must be free of damage that could lead to adulteration of food i.e. holes, leaks).
19. NTG must immediately be notified of any issue found that could compromise the integrity of the load.

Initial: _____

By doing business with NTG you fully agree with the terms and conditions listed herein and the terms and conditions listed in the NTG Broker-Carrier Agreement.

Please include our load number on your invoice with a copy of the proof of delivery. Invoices will not be paid without a P.O.D.!

SEND ALL INVOICES and PODS TO: 244 Perimeter Center Pkwy NE Fourth Floor, Atlanta, GA 30346 POD@NTGFREIGHT.COM, or Fax to 678-569-1059. **WANT TO GET PAID FASTER?** NTG's exclusive carrier payment program offers permanent Net-1 & Net-2 day terms for a nominal fee. Learn more by contacting your carrier Carrier Sales Representative or visiting <http://www.NTGFreight.com/Carriers> . Broker agreement & rate confirmation must be completed, signed, and on file for payment on this load. \$200.00 will be de deducted from the rate is the POD is not received within 48 hours of scheduled delivery, or if this rate confirmation is used as a POD.

1735 Founders Pkwy Suite 300, Alpharetta, GA 30009 TEL (678) 942-9666 FAX (770) 509-9612

Find Loads, Book Loads, Get Paid Fast.

beon Carrier

Beon Carrier gives you visibility and control of your business. Take advantage of enhanced load board features, rate visibility, bid and book options, real-time 1 Day and 2 Day payments and document management - all in one place!

Find Loads Hassle-free

Leverage lane preferences in Beon Carrier to receive optimized load options. With expanded equipment availabilities, carriers have access to a wide range of load preference selections.

Submit Bids & Book Loads

With Beon Carrier, you can view all relevant load details, such as loading hours, appointment times and weight information. Then, submit a bid on the load you want and book it with a single click.

Easy Tender Acceptance

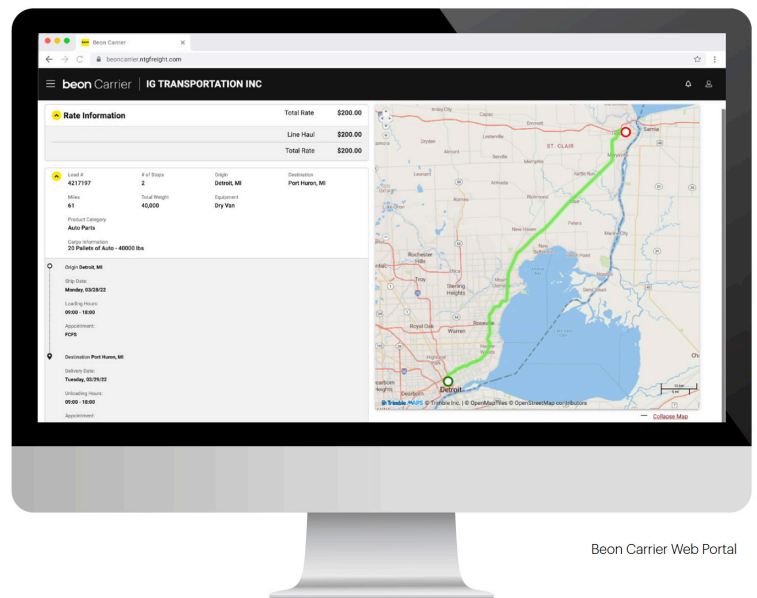
Beon Carrier makes it simple to manage your available tenders. Easily accept or decline freight tenders with the click of a button. For shipments specifically matched for you, simply accept, decline or submit a counteroffer from the tender section within Beon Carrier.

Get Paid Fast

Get paid faster with Beon Carrier – use our 1 Day and 2 Day Payment options that deposit cash directly into your checking account. Access load payment status and receive 24/7 support for any payment inquiries.

Manage Documents with Ease

Easily manage loads within Beon Carrier by uploading a picture of shipment documents. With this feature, your shipments and accessorials will be processed quickly.



LOG IN TODAY

Don't have an account? [Register](#) to get started!



Scan the QR Code to
Download the Beon
Carrier mobile app or
[Click Here](#)

Nolan Transportation Group, LLC

CARRIER CONFIRMATION: NTG LOAD # 8075544

CARRIER SALES REP: GRADY EDWARDS

AFTER HOURS & WEEKEND:

P: (854) 800-6029 Ext 1464

P: (470) 964-2024

E: GRADY.EDWARDS@NTGFREIGHT.COM

E:

CARRIER ROYAL3 INC (MC# 944686)

OFFICE:

BOOKED WITH:

PHONE: (630) 485-7370

FAX: 630-485-6980

EQUIPMENT REQUIRED: VAN 53x102x110

REFERENCE NUMBERS: PO #: RS41287772

BOL #: SH2410-11060

CHARGES: \$0.00 LINE HAUL

\$240.00 DETENTION CHARGE AT CONSIGNEE - 6hr
detention at receiver

\$240.00 TOTAL

CARRIER TERMS AND CONDITIONS CONTINUED: /////FAX BACK THIS CONFIRMATION SIGNED & COMPLETED TO FAX # LOCATED ON BOTTOM RIGHT OF THIS CONFIRMATION. FOR DISPATCH, DRIVER MUST CALL NTG TO ACTIVATE PICK UP# ///// SHOULD A PROBLEM OR CHANGE ARISE AT ANY TIME, NOTIFY NTG IMMEDIATELY, 24/7. RATE IS FOR EXCLUSIVE TRUCK ONLY UNLESS STATED IN WRITING. ALL FREIGHT TRAILERS MUST BE 10 YEARS OR NEWER. DO NOT SIGN FOR DAMAGED GOODS. NTG IS NOT RESPONSIBLE FOR OVERWEIGHT/GROSS TRAILERS AFTER DRIVER HAS LEFT THE SHIPPER. IT IS CARRIER'S RESPONSIBILITY TO CONFIRM OR MAKE ANY NECESSARY APPOINTMENTS 24 HOURS IN ADVANCE, AND CONFIRM DELIVERY ADDRESS ON BILLS. IF DIFFERENT, CALL BOOKING OFFICE IMMEDIATELY FOR APPROVAL. ANY APPROVED CHANGES OR CHARGES MUST BE NOTED ON A NEW RATE CONFIRMATION SUPPLIED BY NTG. ALL LUMPERS AND/OR ASSESSORIAL FEES MUST BE PREAPPROVED BY NTG THROUGH A NEW RATE CONFIRMATION AND AN ORIGINAL RECEIPT SENT IN WITH CARRIER'S INVOICE IN ORDER TO BE REIMBURSED. DRIVER ASSIST AND FUEL SURCHARGE IS INCLUDED IN RATE. CARRIER REPRESENTS THERE ARE NO EXCLUSIONS IN THEIR INSURANCE POLICY THAT WOULD APPLY TO THE FREIGHT BEING TRANSPORTED. NTG DOES NOT ADVANCE FUNDS FOR ANY REASON. CARRIER SHALL COMPLY WITH ALL APPLICABLE FEDERAL, STATE, AND LOCAL LAWS AND REGULATIONS, AS WELL AS ALL ELD COMPLIANCE REGULATIONS, CONCERNING THE TRANSACTIONS CONTEMPLATED BY THIS AGREEMENT. THIS CONFIRMATION MUST BE SIGNED BY CARRIER AND RECEIVED BACK BY OUR BOOKING OFFICE FOR PAYMENT.

STOP: 1 of 1

PICK-UP 10/25/2024 APPT: 12:30

KALMBACH FEEDS INC.

5968 OH-199

CAREY, OH 43316

CONTACT

PICKUP#

SHIPMENT DESCRIPTION

19 ADDENDUM 37929LBS

PICKUP DESCRIPTION

ShipmentID: SH2410-11060

Keep the trailer sealed. Breaking the seal without NTG's written consent may result in a claim..

GPS COMPLIANCE REQUIRED FOR ACCESSORIALS—MUST BE ACCEPTED PRIOR TO PICKUP ARRIVAL & KEPT THROUGH TRANSIT. NTG MUST BE NOTIFIED AT 1.5 HOUR MARK OF WAIT TIME AND POD MUST BE SUBMITTED WITHIN 48 HRS FOR APPROVAL. IN/OUT TIMES MUST BE INCLUDED ON POD. \$40 / HOUR FOR DETENTION IF ABOVE FOLLOWED AND ONTIME ARRIVAL HIT (CAPPED AT \$250).

DELIVER 10/28/2024 APPT: 10:00

DFW1

7243 GRADY NIBLO ROAD

DALLAS, TX 75236

CONTACT

DELIV#

SHIPMENT DESCRIPTION

19 ADDENDUM 37929LBS

DELIVER DESCRIPTION

24-48 Hr Offload at the Receiving Facility *Weekends Excluded*. Receiver will contact carrier once trailer is empty and ready for pick up // Overweight claims must be verified with a certified scale ticket, shipper will adjust accordingly. Driver needs minimum three straps or load bars to properly secure cargo. NTG not responsible for charges incurred if carrier does not have necessary equipment to secure freight. GPS COMPLIANCE REQUIRED FOR ACCESSORIALS—MUST BE ACCEPTED PRIOR TO PICKUP & THROUGH TRANSIT.

Double Brokering this load will cause this contract to become Null & Void. Double Brokering is strictly prohibited!

Signature _____ Position _____ Date _____

Carrier Signature _____ Position _____ Date _____

Driver Name _____ Driver cell _____

Tractor # _____ Trailer# _____

By doing business with NTG you fully agree with NTG terms & conditions listed in the NTG broker agreement, carrier packet, and terms and conditions document located at www.terms.ntgfreight.com.

NTG LOAD # 8075544 MUST BE INCLUDED ON YOUR INVOICE WITH A COPY OF THE P.O.D! Invoices will not be paid without a P.O.D!

SEND ALL INVOICES and PODS TO: 400 Northridge, Suite 1000, Atlanta, GA 30350, POD@NTGFREIGHT.COM, or Fax to 678-569-1059.

WANT TO GET PAID FASTER? NTG's exclusive carrier payment program offers permanent Net-1 & Net-2 day terms for a nominal fee. Learn more by contacting your Carrier Sales Representative or visiting www.NTGFreight.com/Carriers. Broker agreement & rate confirmation must be completed, signed, and on file for payment on this load. If CARRIER cannot supply NTG with the original proof of delivery, NTG reserves the right to obtain a proof of delivery, withhold all payments to CARRIER indefinitely and charge CARRIER a \$50.00 fee.

400 Northridge, Suite 1000, Atlanta, GA 30350

Nolan Transportation Group

CARRIER CONFIRMATION

Rate confirmation continued (page 2/2)

Commodity: perishable

1. Loads quoted as per bag are based on 850 bags. Any change in quantity will result in a different rate.
2. Loads quoted by CWT are based on 43000 lbs of product weight, any change will result in a different rate.
3. Driver responsible for count unless otherwise stated.
4. Driver must maintain reefer at temperature per bill of lading.
5. This is a produce load, pulp all product and record temperature on bill of lading.
6. Driver must call when loaded and check call daily before 10am or a fine of 100 dollars may be levied.
7. In the event of a shortage or damage NTG must be notified immediately or carrier assumes all responsibility for OSD.
8. Detention is on a per load basis, NTG not responsible for acts of God such as rain, hurricanes or other that may affect loading or unloading.
9. All carriers agree by signing this that they are CARB compliant and assume all responsibility thereof.
10. Unloading is the responsibility of the driver unless otherwise agreed to with NTG.
11. For flatbeds, onions will be rated on a per bag rate and need tarps unless otherwise stated.
12. Temperature sensitive foods may only be transported in equipment designed to maintain the proper temperature and normally functioning during transit.
13. Temperature requirements will be specified on the Bill-of-Lading (BOL), if required. Carrier must maintain the specified temperature throughout transit and be able to provide adequate measures to show the temperature was properly maintained.
14. For Less-than Trailer Load (LTL) shipments, appropriate measures must be taken to ensure that there is no cross-contamination or cross-contact with chemicals or allergens.
15. All personnel engaged in transportation operations for the Carrier must be properly trained and records of the training must be maintained.
16. Carrier must be able to provide records that demonstrate compliance with the Rule within 24-hours of request by NTG.
17. Vehicles provided for food transportation must be in sanitary condition prior to loading, must not have signs of pests, debris, foul odors, or spills, and must be free of damage that could lead to adulteration of food (i.e. holes, leaks).
18. Carrier will provide evidence to NTG of transportation traceability, including information regarding previous cargo hauled in bulk or in other equipment; and maintenance and intervening cleaning procedures for docks and equipment.
19. NTG must immediately be notified of any issue found that could compromise the integrity of the load.

Initial:

By doing business with NTG you fully agree with NTG terms & conditions listed in the NTG broker agreement, carrier packet, and terms and conditions document located at www.terms.ntgfreight.com.

Please include our load number on your invoice with a copy of the proof of delivery. Invoices will not be paid without a P.O.D.!

SEND ALL INVOICES and PODS TO: 1735 Founders Pkwy Suite 300, Alpharetta, GA 30009 POD@NTGFREIGHT.COM, or Fax to 678-569-1059.

WANT TO GET PAID FASTER? NTG's exclusive carrier payment program offers permanent Net-1 & Net-2 day terms for a nominal fee. Learn more by contacting your carrier Carrier Sales Representative or visiting www.NTGFreight.com/Carriers. Broker agreement & rate confirmation must be completed, signed, and on file for payment on this load. 200.00 WILL BE DEDUCTED FROM RATE IF POD IS NOT RECEIVED WITHIN 48 HOURS OF SCHEDULED DELIVERY, OR IF THIS RATE CONFIRMATION IS USED AS A POD!

400 Northridge Suite 1000, Atlanta, GA 30350

Find Loads, Book Loads, Get Paid Fast.

beon Carrier

Beon Carrier gives you visibility and control of your business. Take advantage of enhanced load board features, rate visibility, bid and book options, real-time 1 Day and 2 Day payments and document management - all in one place!

Find Loads Hassle-free

Leverage lane preferences in Beon Carrier to receive optimized load options. With expanded equipment availabilities, carriers have access to a wide range of load preference selections.

Submit Bids & Book Loads

With Beon Carrier, you can view all relevant load details, such as loading hours, appointment times and weight information. Then, submit a bid on the load you want and book it with a single click.

Easy Tender Acceptance

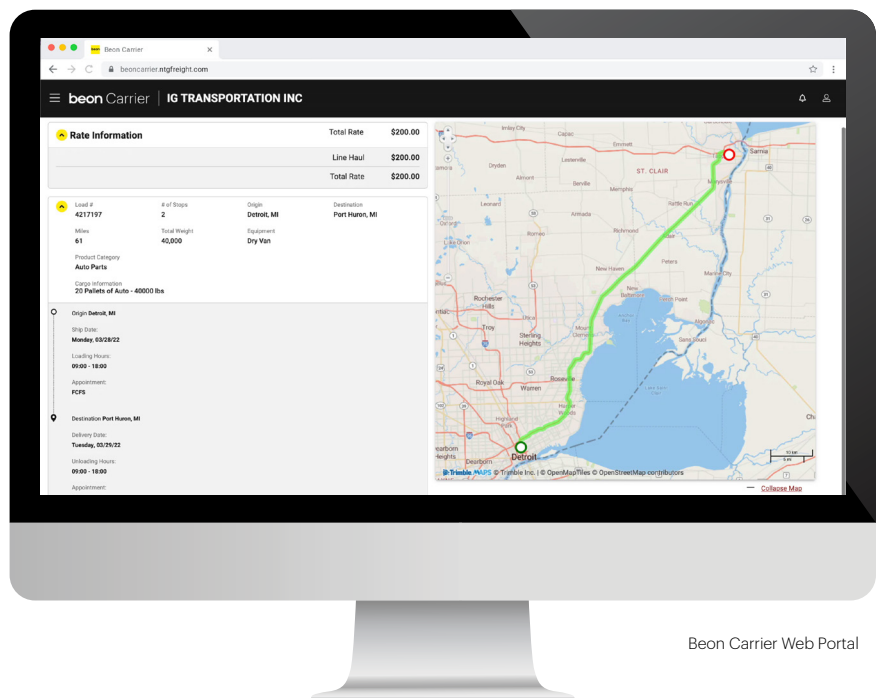
Beon Carrier makes it simple to manage your available tenders. Easily accept or decline freight tenders with the click of a button. For shipments specifically matched for you, simply accept, decline or submit a counteroffer from the tender section within Beon Carrier.

Get Paid Fast

Get paid faster with Beon Carrier – use our 1 Day and 2 Day Payment options that deposit cash directly into your checking account. Access load payment status and receive 24/7 support for any payment inquiries.

Manage Documents with Ease

Easily manage loads within Beon Carrier by uploading a picture of shipment documents. With this feature, your shipments and accessorials will be processed quickly.



Beon Carrier Web Portal

LOG IN TODAY

Don't have an account? **Register** to get started!

© Beon 2022 | All rights reserved.

Bill of Lading – Short Form – Not Negotiable

Ship From				BOL Number: SH2410-11060			
[Name] KALMBACH FEEDS INC. [Street Address] 5968 STATE HWY 199 N [City, ST ZIP Code] CAREY, OH 43316 Stop Notes:				Bar Code Space FN 11:30 0478:30			
Ship To				Carrier Name: NOLAN TL BROKERAGE			
[Name] DFW1 [Street Address] 7243 GRADY NIBLO RD [City, ST ZIP Code] DALLAS, TX 75236 Stop Notes:				Pro Number: Trailer #: 28026 Seal #: 4884C13			
Third Party Freight Charges Bill to				Bar Code Space			
[Name] Chewy [Street Address] 7700 West Sunrise Blvd. [City, ST ZIP Code] Plantation, FL 33322				504 208 8416			
Special Instructions:				Freight Charge Terms			
				Prepaid <input type="checkbox"/> Collect <input checked="" type="checkbox"/> 3rd Party <input type="checkbox"/> <input type="checkbox"/> Master bill of lading with attached underlying bills of lading.			
Chewy PO Number (RS #)							
RS41287772							
Carrier Information							
Handling Unit		Package		Weight	HM (X)	Commodity Description	LTL Only
Qty	Type	Qty	Type				NMFC No.
19	PALLETS			37929.81 LB		HORSE FOOD, M-FARM-FEED, M-FARM-VITAMINS-SUPPLEMENTS, SMALLPET FOOD FOOD	60.0
				Grand Total			
19				37929.81 LB			
Where the rate is dependent on value, shippers are required to state specifically in writing the agreed or declared value of the property as follows: "The agreed or declared value of the property is specifically stated by the shipper to be not exceeding _____ per _____"						COD Amount: \$ _____ Fee terms: Collect <input type="checkbox"/> Prepaid <input type="checkbox"/> Customer check acceptable <input type="checkbox"/>	
Note: Liability limitation for loss or damage in this shipment may be applicable. See 49 USC § 14706(c)(1)(A) and (B).							
Received, subject to individually determined rates or contracts that have been agreed upon in writing between the carrier and shipper, if applicable, otherwise to the rates, classifications, and rules that have been established by the carrier and are available to the shipper, on request, and to all applicable state and federal regulations.						Shipper Signature 10.25.24	
						Carrier Signature/Pickup Date	
This is to certify that the above named materials are properly classified, packaged, marked, and labeled, and are in proper condition for transportation according to the applicable regulations of the DOT.						Carrier acknowledges receipt of packages and required placards. Carrier certifies emergency response information was made available and/or carrier has the DOT emergency response guidebook or equivalent documentation in the vehicle. Property described above is received in good order, except as noted.	

Chewy.com - Tim Ruffin 10/28