

**Bill to:**

RDX Brokerage LLC  
7731 hwy 70 suite 107,  
Memphis,  
TN,  
38133

Invoice Date: 03/22/2024

Invoice #: 543580

Terms: NET 30

Due Date: 04/22/2024

Date	Customer Ref #	Origin - Destination	Quantity	Rate	Amount
03/21/2024		5238 Lamar Ave, Memphis, TN 38118, USA - 27 Bear Hollow Rd, Pineville, MO 64856, USA			
			1	\$1,000.00	\$1,000.00

<b>TOTAL</b>
\$1,000.00

**PLEASE NOTE**

The right to payment under this invoice has been assigned to Compass payment Solutions LLC (CFS) and all payments hereunder are to be directed to the assignee at the address noted below.

Remittances to other than CFS do not constitute payment of this invoice. CFS must be given notification of any claims, agreements or merchandise returns which would affect the payment of all or part of this Invoice on the due date.

**COMPASS FUNDING SOLUTIONS LLC**

**P.O.BOX 205154**

**DALLAS, TX 75320-5154**

**Tel: 844-899-8092**



RDX BROKERAGE LLC  
 4590 American Way  
 Memphis, TN 38118  
 MC: 802338 P: 901-308-1364 F: 888-634-3481

LOAD NUMBER  
**543580**

3/21/2024

### DISPATCH CONFIRMATION

Carrier: <b>Zigi Freight Inc dba Royal3 Inc</b> Chicago, IL	MCID: <b>944686</b>	Driver: <b>William</b>
Ph/Fax: <b>630-485-7370</b> <b>630-485-7370</b>	Reference:	Cell: <b>470-652-0299</b>
Attn: <b>Jack</b>	Trailer: <b>W94939</b>	Truck: <b>708</b>

Load Info		The Following Pay Is Authorized For This Load			
Pieces: <b>0</b>	Miles: <b>331</b>	Pay Code	Pay Type	Rate	Total
Space: <b>0</b>	Pallets:	<b>Load</b>	<b>Flat</b>	<b>1,000.00</b>	<b>1,000.00</b>
Act Wgt: <b>20000</b>	Type: <b>Van</b>			Total	<b>1,000.00</b>
As Wgt: <b>20000</b>	Trailer: <b>53' Van</b>				
Value:					

Stop	From	To	Name Address	City Phone	St Zip	Ref Contact	Appt Appt Ref	
1	PU	3/21 08:00	3/21 15:00	Jabil Dock Door 10 5238 Lamar Ave	Memphis 901-907-2870	TN 38118	Steve	No
2	Del	3/22 08:00	3/22 08:00	Walmart Starco LLC 27 Bear Hollow Rd	Pineville 479-277-3275	MO 64856-82	1000023663 Patty Archer	No

Directions **POD MUST BE PROVIDED UPON DELIVERY OR 50\$ FINE WILL OCCUR, LEGIBLE PICTURE FROM DRIVER ACCEPTABLE**

Commodity	Description Reference	Pieces	Weight
Freight - All Kinds		0	20,000
Totals		0	20,000

**MUST SEE STEVE AT DOCK DOOR 10 - MUST PICKUP AND DELIVER ON TIME OR FINE WILL OCCUR. MUST SEND IN SIGNED BOL FROM SHIPPER UPON LOADING. MUST ACCEPT AND STAY ON MACROPOINT FOR THE ENTIRETY OF THE LOAD OR FINE WILL OCCUR.**

jack.j@royal3inc.com

---

**DISPATCH CONFIRMATION**

Page 2 of 2

Load No 543580 - 3/21/24

---

QUICK PAY BY ACH within 24 hours at 3% Intial Here \_\_\_\_\_ Quick Pay within 7 days ACH at 2% Intial Here \_\_\_\_\_

\*\*\*Driver or Dispatch must check call dispatch Empty and Loaded\*\*\* NO DOUBLE BROKERING ALLOWED,IF IT OCCURS  
LOSS OF PAYMENT WILL APPLY\*\*\* Late/No Call, No Show/Missed pickup or delivery may result in a fine. \*\*Accessorials must be  
reported to the broker at the time of occurrence\*\*. Carrier is responsible for securing the shipment.

CLEAR PODS ARE REQUIRED TO BE EMAILED TO ACCOUNTING@GORDX.COM WITHIN 48 HOURS OF DELIVERY  
UNLESS SPECIFIED 24 HOURS, OR A LATE POD FINE OF \$50 WILL BE APPLIED DAILY UNTIL RECEIVED!\*\*\*\* TO ENSURE

PROPER PAYMENT INVOICES MUST BE SENT RATE WITH CONFIRMATION & BOL to

ACCOUNTING@GORDX.COM\*\*\*RATE CONFIRMATIONS WILL NOT BE ACCEPTED AS A POD. WRITING THE CARRIER  
RATE ON A BOL IS SUBJECT TO A FINE AND CAN BE USED A FORM OF SOLICITATION. The COVID-19 outbreak has caused  
disruption within the supply chain and driven heightened awareness and around action prevention and risk mitigation. RDX

Brokerage expects that all service delivery providers are vigilant in their efforts to mitigate risk to their clients and the end  
consumer. Please review and follow all guidelines posted by the National Institutes of Health ([www.nih.gov](http://www.nih.gov)) and Centers for  
Disease Control ([www.cdc.gov](http://www.cdc.gov)) during this shipment.

---

**SYDNEY PHILLIPS**

RDX BROKERAGE LLC

3/21/24

DATE:

Zigi Freight Inc dba Royal3 Inc

3/21/24

DATE:

1.0	CAS	12.0	PCS	309.0	1b	48.0 X 40.0 X 52.0 in	Monitor Touch - Black		
							TCx Display 80T - 15		
							Monitor Touch - Black	125.0	
1.0	CAS	12.0	PCS	309.0	1b	48.0 X 40.0 X 52.0 in	TCx Display 80T - 15		
							Monitor Touch - Black	125.0	
1.0	CAS	12.0	PCS	307.0	1b	48.0 X 40.0 X 52.0 in	TCx Display 80T - 15		
							Monitor Touch - Black	125.0	
1.0	CAS	12.0	PCS	301.0	1b	48.0 X 40.0 X 52.0 in	TCx Display 80T - 15		
							Monitor Touch - Black	125.0	
1.0	CAS	12.0	PCS	316.0	1b	48.0 X 40.0 X 52.0 in	TCx Display 80T - 15		
							Monitor Touch - Black	125.0	
1.0	CAS	12.0	PCS	317.0	1b	48.0 X 40.0 X 52.0 in	TCx Display 80T - 15		
							Monitor Touch - Black	125.0	
1.0	CAS	12.0	PCS	313.0	1b	48.0 X 40.0 X 52.0 in	TCx Display 80T - 15		
							Monitor Touch - Black	125.0	
1.0	CAS	8.0	PCS	214.0	1b	48.0 X 40.0 X 36.0 in	TCx Display 80T - 15		
							Monitor Touch - Black	125.0	
1.0	CAS	8.0	PCS	215.0	1b	48.0 X 40.0 X 36.0 in	TCx Display 80T - 15		
							Monitor Touch - Black	125.0	
1.0	CAS	12.0	PCS	316.0	1b	48.0 X 40.0 X 52.0 in	TCx Display 80T - 15		
							Monitor Touch - Black	125.0	
1.0	CAS	12.0	PCS	313.0	1b	48.0 X 40.0 X 52.0 in	TCx Display 80T - 15		
							Monitor Touch - Black	125.0	
1.0	CAS	12.0	PCS	313.0	1b	48.0 X 40.0 X 52.0 in	TCx Display 80T - 15		
							Monitor Touch - Black	125.0	
1.0	CAS	12.0	PCS	313.0	1b	48.0 X 40.0 X 52.0 in	TCx Display 80T - 15		
							Monitor Touch - Black	125.0	
1.0	CAS	12.0	PCS	319.0	1b	48.0 X 40.0 X 52.0 in	TCx Display 80T - 15		
							Monitor Touch - Black	125.0	
1.0	CAS	12.0	PCS	319.0	1b	48.0 X 40.0 X 52.0 in	TCx Display 80T - 15		
							Monitor Touch - Black	125.0	
1.0	CAS	12.0	PCS	311.0	1b	48.0 X 40.0 X 52.0 in	TCx Display 80T - 15		
							Monitor Touch - Black	125.0	
1.0	CAS	12.0	PCS	306.0	1b	48.0 X 40.0 X 52.0 in	TCx Display 80T - 15		
							Monitor Touch - Black	125.0	
1.0	CAS	12.0	PCS	315.0	1b	48.0 X 40.0 X 52.0 in	TCx Display 80T - 15		
							Monitor Touch - Black	125.0	
1.0	CAS	12.0	PCS	323.0	1b	48.0 X 40.0 X 52.0 in	TCx Display 80T - 15		
							Monitor Touch - Black	125.0	
1.0	CAS	12.0	PCS	314.0	1b	48.0 X 40.0 X 52.0 in	TCx Display 80T - 15		
							Monitor Touch - Black	125.0	
34.0		400.0		10411.0			PAGE TOTAL		
							GRAND TOTAL (including supplemental pages)		
34.0		400.0		10411.0		0.108 m <sup>3</sup>			

# SHIPPER REQUESTS INSURANCE

- ☐ NO
- ☐ YES

If shipper has requested insurance to be provided for its full value, shipment is covered by the carrier's insurance.

Shipped under authority of shipper. Received in satisfactory condition unless noted here. No gross valuation after receipt (leave blank).

SHIPPER'S CERTIFICATE FOR THIS SHIPMENT MAY BE APPLICABLE FOR THE SHIPPER'S USE ONLY. FOR OTHER SHIPMENTS, SHIPPER'S CERTIFICATE FOR THE SHIPMENT MUST BE SUBMITTED TO THE CARRIER'S OFFICE. RECEIVED, SUBJECT TO SPECIFICALLY DETERMINED RATES OR CONTRACTS THAT HAVE BEEN AGREED UPON IN WRITING BETWEEN THE CARRIER AND SHIPPER. IF APPLICABLE, OTHERWISE TO THE RATES, CLASSIFICATIONS AND RULES THAT HAVE BEEN ESTABLISHED BY THE CARRIER AND ARE AVAILABLE TO THE SHIPPER, ON REQUEST, AND TO ALL APPLICABLE STATE AND FEDERAL REGULATIONS. CARRIER LOADED BY THE SHIPPER AND UNLOADED BY THE CONSIGNEE UNLESS MARKED DIFFERENT. ACCOUNTABILITY FOR CLAIMS SUBJECT TO STANDARD AND NATIONAL TRANSPORTATION LEGISLATIONS OR CONTRACTUAL WRITING AGREEMENTS.

Trailer Loaded: Freight Counted:

- ☐ By Shipper
- ☐ By Driver
- ☐ By Shipper
- ☐ By Driver / Pallets sold to consignee
- ☐ By Driver / Pallets

*Jeffery Watkins*  
Shipper Signature

3/13/24  
Date

SHIPPER Name/Title/Phone:

Carrier Signature

Pick Up Date

CARRIER Name/Title/Phone:

This is to certify that the above named materials are properly classified, described, packaged, marked and labeled and are in proper condition for transportation according to the applicable regulations of the U.S. DOT. (ATA in case of Air or Ocean). OUTSIDE the USA, this shipment complies also with the applicable security standards of local and national transportation.

Carrier acknowledges receipt of packages and required documents. Carrier certifies emergency response information was made available under carrier's U.S. DOT (or country equivalent) emergency response guidelines or equivalent documentation in the vehicle. This carrier shall not make delivery of this shipment without payment of freight and all other bills charges. In case of a subcontracted carrier, where pickup/delivery is under authority and complies with local legislation and comprehensive security measures within its market practices.

"These commodities, technology or software were exported in accordance with the Export Administration Regulations of Origin Country (and including the USA compliance regulations/Diversion contract to U.S. law prohibited)"



# STANDARD BILL OF LADING / MANIFEST

Page 1 of 3

Print Date: 03/13/2024

## SHIPPER

TGCS\_US\_Fulfillment  
Toshiba GCS, INCCIO Jabil Circuit,  
Memphis, 38118  
US

Contact Info  
Jacob Hodges  
Phone: 910-202-7500

## SHIP TO

Walmart Starco Lic  
27 Bear Hollow Rd vendor, 303982  
Pineville, 64856  
US

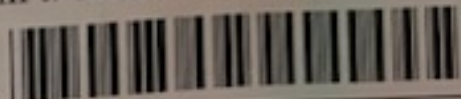
Contact Info  
Phone:

## FREIGHT PAYMENT BILL TO

Jabil Inc / TGCS Loc # 80  
360 West Butterfield Rd  
Elmhurst, 60126  
US

Contact Info  
C/O Tranzact Technologies  
Phone:

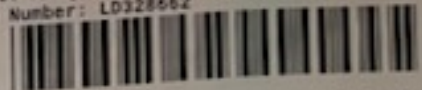
Bill of Lading Number: LD328662



Carrier Name: RDX

SCAC: RDXQ

Pro Number: LD328662



Master Bill of Lading with attached underlying BOLs ☐

METHOD OF TRANSPORT:

TL

SERVICE LEVEL:  
Standard

Trailer number:

Seal Number: 4693837

Freight Payment Terms:

Prepaid ☐ Collect ☐ Third Party ☐

ETA Date: 03/18/2024

EXPORT FILE #

FREIGHT TO BE CHARGED ACCT#

DUTY TO BE CHARGED ACCT# (WHEN APPLICABLE)

SPECIAL INSTRUCTIONS

DATE: 3-22-24  
TIME: 2:52  
FREIGHT BILL RECEIVED IN FULL  
TRLR# 0  
TOT PIECES REC 408  
TOT PLS 34  
TOTAL PILES REJECTED 1  
REASON: *[Signature]*  
REC# *[Signature]*  
REC'D BY: *[Signature]*  
DRYHELP

Attn: Receiving

PO Reference(s):

SCN Reference(s):

## CUSTOMER ORDER INFORMATION

CUSTOMER ORDER NUMBER	INNER PACKAGES	NET WEIGHT (UOM)	Shipment Reference Number
	400.0	400.0lb	703940975
PAGE SUBTOTAL	400.0	400.0	
GRAND TOTAL	400.0	400.0	

## CARRIER INFORMATION

HANDLING UNIT	INNER PACKAGES QTY	SHIPPER'S GROSS WEIGHT (UOM)	HAZ MAT (X)	DIMENSIONS L X W X H (UOM)	COMMODITY DESCRIPTION	NMFC#	CLASS
QTY TYPE	QTY TYPE						
1.0 CAS	12.0 PCS	308.0 lb		48.0 X 40.0 X 52.0 in	TCx Display 80T - 15 Monitor Touch - Black		125.0
1.0 CAS	12.0 PCS	309.0 lb		48.0 X 40.0 X 52.0 in	TCx Display 80T - 15 Monitor Touch - Black		125.0
1.0 CAS	12.0 PCS	312.0 lb		48.0 X 40.0 X 52.0 in	TCx Display 80T - 15 Monitor Touch - Black		125.0
1.0 CAS	12.0 PCS	314.0 lb		48.0 X 40.0 X 52.0 in	TCx Display 80T - 15 Monitor Touch - Black		125.0
1.0 CAS	12.0 PCS	310.0 lb		48.0 X 40.0 X 52.0 in	TCx Display 80T - 15 Monitor Touch - Black		125.0
1.0 CAS	12.0 PCS	320.0 lb		48.0 X 40.0 X 52.0 in	TCx Display 80T - 15 Monitor Touch - Black		125.0
1.0 CAS	12.0 PCS	309.0 lb		48.0 X 40.0 X 52.0 in	TCx Display 80T - 15 Monitor Touch - Black		125.0
1.0 CAS	12.0 PCS	313.0 lb		48.0 X 40.0 X 52.0 in	TCx Display 80T - 15 Monitor Touch - Black		125.0
1.0 CAS	12.0 PCS	304.0 lb		48.0 X 40.0 X 52.0 in	TCx Display 80T - 15 Monitor Touch - Black		125.0
1.0 CAS	12.0 PCS	311.0 lb		48.0 X 40.0 X 52.0 in	TCx Display 80T - 15 Monitor Touch - Black		125.0
1.0 CAS	12.0 PCS	315.0 lb		48.0 X 40.0 X 52.0 in	TCx Display 80T - 15 Monitor Touch - Black		125.0
1.0 CAS	12.0 PCS	320.0 lb		48.0 X 40.0 X 52.0 in	TCx Display 80T - 15 Monitor Touch - Black		125.0
1.0 CAS	12.0 PCS	315.0 lb		48.0 X 40.0 X 52.0 in	TCx Display 80T - 15 Monitor Touch - Black		125.0
1.0 CAS	12.0 PCS	306.0 lb		48.0 X 40.0 X 52.0 in	TCx Display 80T - 15		125.0



	CAS	12.0	PCS	309.0 lb	48.0 X 40.0 X 52.0 in	Monitor Touch - Black	125.0
1.0	CAS	12.0	PCS	309.0 lb	48.0 X 40.0 X 52.0 in	TCx Display B0T - 15 Monitor Touch - Black	125.0
1.0	CAS	12.0	PCS	307.0 lb	48.0 X 40.0 X 52.0 in	TCx Display B0T - 15 Monitor Touch - Black	125.0
1.0	CAS	12.0	PCS	301.0 lb	48.0 X 40.0 X 52.0 in	TCx Display B0T - 15 Monitor Touch - Black	125.0
1.0	CAS	12.0	PCS	316.0 lb	48.0 X 40.0 X 52.0 in	TCx Display B0T - 15 Monitor Touch - Black	125.0
1.0	CAS	12.0	PCS	317.0 lb	48.0 X 40.0 X 52.0 in	TCx Display B0T - 15 Monitor Touch - Black	125.0
1.0	CAS	12.0	PCS	313.0 lb	48.0 X 40.0 X 52.0 in	TCx Display B0T - 15 Monitor Touch - Black	125.0
1.0	CAS	8.0	PCS	214.0 lb	48.0 X 40.0 X 36.0 in	TCx Display B0T - 15 Monitor Touch - Black	125.0
1.0	CAS	8.0	PCS	215.0 lb	48.0 X 40.0 X 36.0 in	TCx Display B0T - 15 Monitor Touch - Black	125.0
1.0	CAS	12.0	PCS	316.0 lb	48.0 X 40.0 X 52.0 in	TCx Display B0T - 15 Monitor Touch - Black	125.0
1.0	CAS	12.0	PCS	313.0 lb	48.0 X 40.0 X 52.0 in	TCx Display B0T - 15 Monitor Touch - Black	125.0
1.0	CAS	12.0	PCS	313.0 lb	48.0 X 40.0 X 52.0 in	TCx Display B0T - 15 Monitor Touch - Black	125.0
1.0	CAS	12.0	PCS	310.0 lb	48.0 X 40.0 X 52.0 in	TCx Display B0T - 15 Monitor Touch - Black	125.0
1.0	CAS	12.0	PCS	310.0 lb	48.0 X 40.0 X 52.0 in	TCx Display B0T - 15 Monitor Touch - Black	125.0
1.0	CAS	12.0	PCS	311.0 lb	48.0 X 40.0 X 52.0 in	TCx Display B0T - 15 Monitor Touch - Black	125.0
1.0	CAS	12.0	PCS	306.0 lb	48.0 X 40.0 X 52.0 in	TCx Display B0T - 15 Monitor Touch - Black	125.0
1.0	CAS	12.0	PCS	315.0 lb	48.0 X 40.0 X 52.0 in	TCx Display B0T - 15 Monitor Touch - Black	125.0
1.0	CAS	12.0	PCS	323.0 lb	48.0 X 40.0 X 52.0 in	TCx Display B0T - 15 Monitor Touch - Black	125.0
1.0	CAS	12.0	PCS	314.0 lb	48.0 X 40.0 X 52.0 in	TCx Display B0T - 15 Monitor Touch - Black	125.0
34.0		400.0		10411.0		PAGE TOTAL GRAND TOTAL (including supplemental pages)	
34.0		400.0		10411.0	0.190 m <sup>3</sup>		

**SHIPPER REQUESTS INSURANCE**

☐ NO

☒ YES

If shipper has requested insurance as provided for at the left hereof, shipment is insured to the amount indicated in the amount indicated in the provisions as specified in the Carrier's Tariffs. Insurance is payable to shipper. Potential other terms & conditions might apply based on documented prior negotiations on case beneficial to shipper.

NOTE: Liability limitation for loss or damage on this shipment may be applicable if you are a U.S.C. (U.S.A.) and (U.S.). For other countries, national department of transportation regulations apply.

RECEIVED, subject to individually determined rates or contracts that have been agreed upon in writing between the carrier and shipper, if applicable, otherwise to the rates, classifications and rules that have been established by the carrier and are available to the shipper, on request, and to all applicable state and federal regulations.

CARRIER loaded by the shipper and unloaded by the consignee unless marked different.

ACCOUNTABILITY for claims subject to standard and national transportation legislations or contractual written agreements.

**Trailer Loaded:** ☐ By Shipper ☐ By Driver

**Freight Counted:** ☐ By Shipper ☐ By Driver / Pallets said to contain ☐ By Driver / Pieces

**Carrier Signature** \_\_\_\_\_ **Pick Up Date** \_\_\_\_\_

**CARRIER Name/Title/Phone:** \_\_\_\_\_

Property described above is received in good order, except as noted.

Carrier acknowledges receipt of packages and required placards. Carrier carries emergency response information was made available and/or carrier has the U.S. DOT (or country equivalent) emergency response guidebook or equivalent documentation in the vehicle. This carrier shall not make delivery of this shipment without payment of freight and all other lawful charges. In case of a subcontracted carrier, whom pick-up carrier is under authority and complies with local legislation and comprehensive security measures within its market practices.

This is to certify that the above named materials are properly classified, described, packaged, marked and labeled and are in proper condition for transportation according to the applicable regulations of the U.S. DOT. (DATA in case of Air or Ocean). OUTSIDE THE USA: this shipment complies also with the applicable security standards of local and national transportation.

"These commodities, technology or software were exported in accordance with the Export Administration Regulations of Origin Country (and including the USA compliance regulations/diversion contract to U.S. law prohibited)"